

# UTAH LAND SURVEY MONUMENT RECORD

• TYPE OF MONUMENT:  SECTION CORNER  QUARTER CORNER  SIXTEENTH CORNER  OTHER \_\_\_\_\_

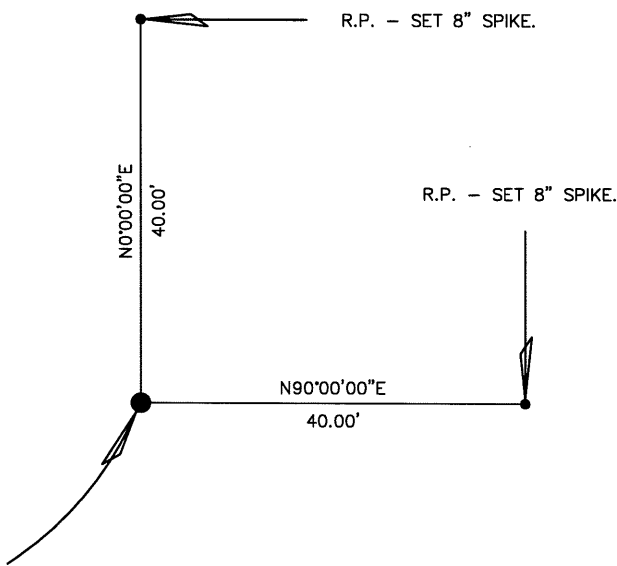
• DESCRIPTION AND DATE OF MONUMENT FOUND:

ON THE DATE OF 11/14/2012 WE FOUND THE MONUMENT FOR THIS CORNER COMMON TO 4 SECTIONS WHICH IS A 1940 2.5" G.L.O. BRASS CAP ON A 2" STEEL PIPE PROTRUDING 1.6' ABOVE THE GROUND. THERE IS A PILE OF STONES CENTERED AROUND THE BASE OF THE MONUMENT MEASURING 4' IN DIAMETER AND PROTRUDING 1' HIGH.

• DESCRIPTION OF MONUMENT SET BY YOU TO PERPETUATE THE LOCATION OF THIS POINT:

SET REFERENCE POINTS FOR THE CORNER AS SHOWN.

• SKETCH SHOWING RELATIVE LOCATION OF MONUMENT, ACCESSORIES AND REFERENCE POINTS STATING WHETHER FOUND OR SET, SHOW SUPPORTING AND/OR CONTRADICTIONARY EVIDENCE WHERE APPLICABLE:



THE MONUMENT FOR THIS CORNER COMMON TO 4 SECTIONS IS A 1940 2.5" G.L.O. BRASS CAP ON A 2" STEEL PIPE PROTRUDING 1.6' ABOVE THE GROUND. THERE IS A PILE OF STONES CENTERED AROUND THE BASE OF THE MONUMENT MEASURING 4' IN DIAMETER AND PROTRUDING 1' HIGH.

THIS MONUMENT IS FOR:

T16S	R9E
S15	S14
+	
S22	S23
1940	
SLB&M	



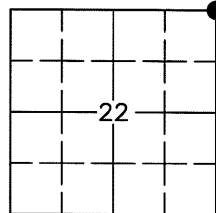
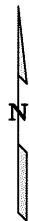
SCALE 1"=20'  
(EXCEPT IN TRIVIAL CASES)  
BEARINGS ARE RELATED TO WGS 84 WITH GPS OBSERVATIONS  
DRAWN BY: AMM  
11/20/2012  
P.C. M. ANDERSON

**CERTIFICATION**

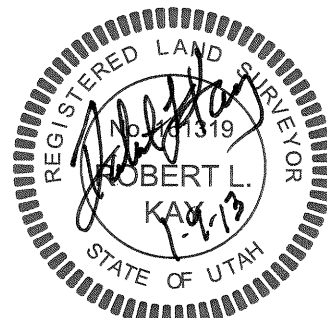
This is to certify that I was in responsible charge of the surveying work described in this record and that to the best of my knowledge the information presented herein is true and correct.

Surveyor's Name (Please Print): Robert L. Kay  
 Firm Name: UELS, LLC  
 Firm Address: 85 SOUTH 200 EAST, VERNAL, UTAH 84078  
 Phone: 435-789-1017 Utah License Number: 161319

1" = 1 Mile



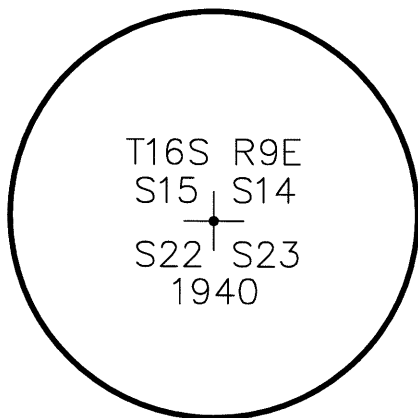
● = Location of Monument



Corner CORNER COMMON TO 4 SECTIONS  
 Name: NORTHEAST CORNER OF SECTION 22 Signature/Date through Seal

SEC 22 T 16S R 9E, S.L. B&M.  
 COUNTY EMERY INDEX REF NUMBER 17-N

Not to scale



Stamping on Cap

- a. Date of field Work to Establish, Restore or Rehabilitate Monument: 11/14/2012
- b. Date Monument was used as a Control corner: 11/14/2012

# UTAH LAND SURVEY MONUMENT RECORD

• TYPE OF MONUMENT:  SECTION CORNER  QUARTER CORNER  SIXTEENTH CORNER  OTHER \_\_\_\_\_

• DESCRIPTION AND DATE OF MONUMENT FOUND:

ON THE DATE OF 11/14/2012 WE FOUND THE MONUMENT FOR THIS 1/4 CORNER OF MAXIMUM CONTROL WHICH IS A 1940 2.25" G.L.O. BRASS CAP ON A 1" STEEL PIPE PROTRUDING 0.5' ABOVE THE GROUND. THERE IS A PILE OF STONES ON THE WEST SIDE OF THE MONUMENT WHICH MEASURES 4' IN DIAMETER AND PROTRUDING 2' HIGH.

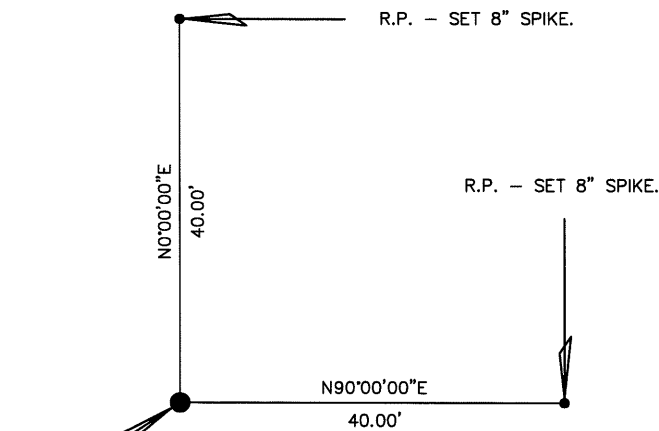
• DESCRIPTION OF MONUMENT SET BY YOU TO PERPETUATE THE LOCATION OF THIS POINT:

SET REFERENCE POINTS FOR THE CORNER AS SHOWN.

• SKETCH SHOWING RELATIVE LOCATION OF MONUMENT, ACCESSORIES AND REFERENCE POINTS STATING WHETHER FOUND OR SET, SHOW SUPPORTING AND/OR CONTRADICTIONARY EVIDENCE WHERE APPLICABLE:

THE MONUMENT FOR THIS 1/4 CORNER OF MAXIMUM CONTROL IS A 1940 2.25" G.L.O. BRASS CAP ON A 1" STEEL PIPE PROTRUDING 0.5' ABOVE THE GROUND. THERE IS A PILE OF STONES ON THE WEST SIDE OF THE MONUMENT WHICH MEASURES 4' IN DIAMETER AND PROTRUDING 2' HIGH.

THIS MONUMENT IS FOR: T16S R9E  
1/4  
S22 | S23  
1940  
SLB&M



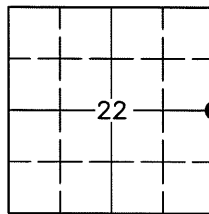
SCALE 1"=20'  
(EXCEPT IN TRIVIAL CASES)  
BEARINGS ARE RELATED TO WGS 84 WITH GPS OBSERVATIONS  
DRAWN BY: AMM  
11/20/2012  
P. C. M. ANDERSON

**CERTIFICATION**

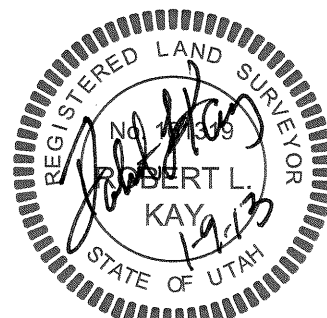
This is to certify that I was in responsible charge of the surveying work described in this record and that to the best of my knowledge the information presented herein is true and correct.

Surveyor's Name (Please Print): Robert L. Kay  
Firm Name: UELS, LLC  
Firm Address: 85 SOUTH 200 EAST, VERNAL, UTAH 84078  
Phone: 435-789-1017 Utah License Number: 161319

1" = 1 Mile



● = Location of Monument

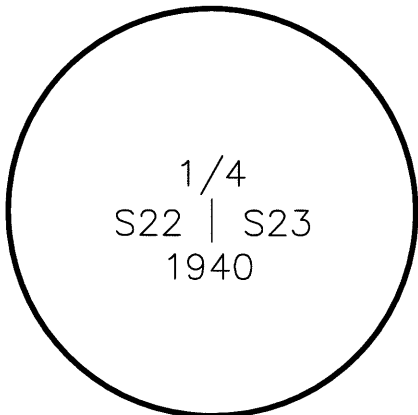


Corner 1/4 CORNER OF MAXIMUM CONTROL  
Name: EAST 1/4 CORNER OF SECTION 22

Signature/Date through Seal

SEC 22 T 16S R 9E, S.L. B&M.  
COUNTY EMERY INDEX REF NUMBER 17-L

Not to scale



Stamping on Cap

- a. Date of field Work to Establish, Restore or Rehabilitate Monument: 11/14/2012
- b. Date Monument was used as a Control corner: 11/14/2012

# UTAH LAND SURVEY MONUMENT RECORD

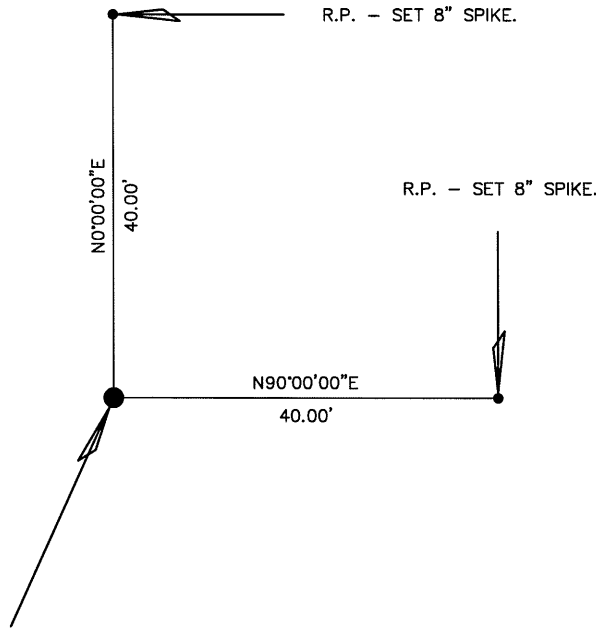
• TYPE OF MONUMENT:  SECTION CORNER  QUARTER CORNER  SIXTEENTH CORNER  OTHER \_\_\_\_\_

• DESCRIPTION AND DATE OF MONUMENT FOUND:

ON THE DATE OF 11/14/2012 WE FOUND THE MONUMENT FOR THIS 1/4 CORNER OF MAXIMUM CONTROL WHICH IS A 1940 2.25" G.L.O. BRASS CAP ON A 1" STEEL PIPE PROTRUDING 0.8' ABOVE THE GROUND. THERE IS A PILE OF STONES SURROUNDING THE BASE OF THE MONUMENT WHICH MEASURES 4' IN DIAMETER AND PROTRUDING 0.8' HIGH.

• DESCRIPTION OF MONUMENT SET BY YOU TO PERPETUATE THE LOCATION OF THIS POINT:  
SET REFERENCE POINTS FOR THE CORNER AS SHOWN.

• SKETCH SHOWING RELATIVE LOCATION OF MONUMENT, ACCESSORIES AND REFERENCE POINTS STATING WHETHER FOUND OR SET, SHOW SUPPORTING AND/OR CONTRADICTORY EVIDENCE WHERE APPLICABLE:



THE MONUMENT FOR THIS 1/4 CORNER OF MAXIMUM CONTROL IS A 1940 2.25" G.L.O. BRASS CAP ON A 1" STEEL PIPE PROTRUDING 0.8' ABOVE THE GROUND. THERE IS A PILE OF STONES SURROUNDING THE BASE OF THE MONUMENT WHICH MEASURES 4' IN DIAMETER AND PROTRUDING 0.8' HIGH.

THIS MONUMENT IS FOR:  
T16S R9E  
1/4 S15  
S22  
1940  
SLB&M

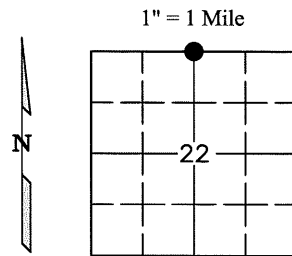


SCALE 1"=20'  
(EXCEPT IN TRIVIAL CASES)  
BEARINGS ARE RELATED TO WGS 84 WITH GPS OBSERVATIONS  
DRAWN BY: AMM  
11/19/2012  
P.C. M. ANDERSON

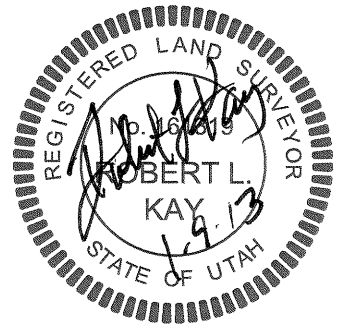
**CERTIFICATION**

This is to certify that I was in responsible charge of the surveying work described in this record and that to the best of my knowledge the information presented herein is true and correct.

Surveyor's Name (Please Print): Robert L. Kay  
Firm Name: UELS, LLC  
Firm Address: 85 SOUTH 200 EAST, VERNAL, UTAH 84078  
Phone: 435-789-1017 Utah License Number: 161319



● = Location of Monument

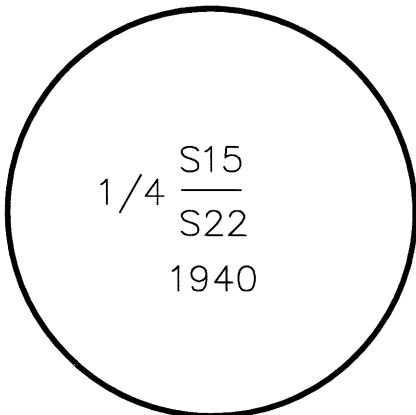


Corner 1/4 CORNER OF MAXIMUM CONTROL  
Name: NORTH 1/4 CORNER OF SECTION 22

Signature/Date through Seal

SEC 22 T 16S R 9E, S.L. B&M.  
COUNTY EMERY INDEX REF NUMBER 15-N

Not to scale



Stamping on Cap

- a. Date of field Work to Establish, Restore or Rehabilitate Monument: 11/14/2012
- b. Date Monument was used as a Control corner: 11/14/2012

# UTAH LAND SURVEY MONUMENT RECORD

• TYPE OF MONUMENT:  SECTION CORNER  QUARTER CORNER  SIXTEENTH CORNER  OTHER \_\_\_\_\_

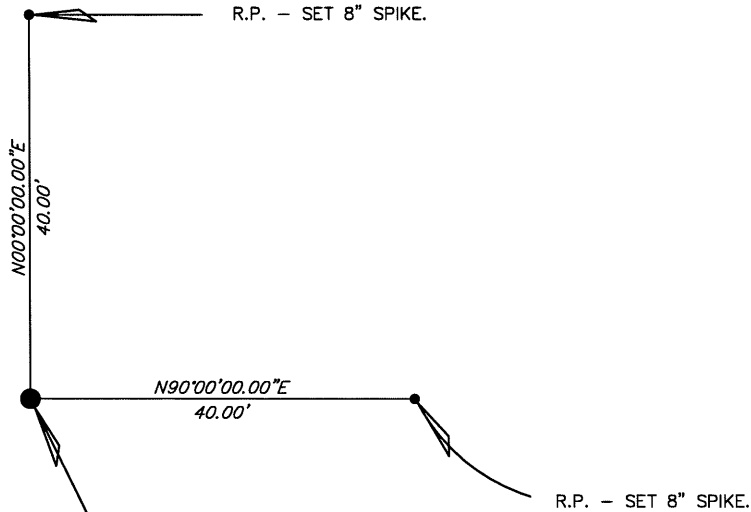
• DESCRIPTION AND DATE OF MONUMENT FOUND:

ON THE DATE OF 11/14/2012 WE FOUND THE MONUMENT FOR THIS CORNER COMMON TO 4 SECTIONS WHICH IS A 1940 2.5" G.L.O. BRASS CAP ON A 2" STEEL PIPE PROTRUDING 2' ABOVE THE GROUND. THERE IS A PILE OF STONES AROUND THE BASE OF THE MONUMENT MEASURING 4' IN DIAMETER AND PROTRUDING 1' HIGH. THERE IS A RED T-POST 2' NORTH OF THE MONUMENT PROTRUDING 5' HIGH.

• DESCRIPTION OF MONUMENT SET BY YOU TO PERPETUATE THE LOCATION OF THIS POINT:

SET REFERENCE POINTS FOR THE CORNER AS SHOWN.

• SKETCH SHOWING RELATIVE LOCATION OF MONUMENT, ACCESSORIES AND REFERENCE POINTS STATING WHETHER FOUND OR SET, SHOW SUPPORTING AND/OR CONTRADICTORY EVIDENCE WHERE APPLICABLE:



THE MONUMENT FOR THIS CORNER COMMON TO 4 SECTIONS IS A 1940 2.5" G.L.O. BRASS CAP ON A 2" STEEL PIPE PROTRUDING 2' ABOVE THE GROUND. THERE IS ALSO A PILE OF STONES AROUND THE BASE OF THE MONUMENT MEASURING 4' IN DIAMETER AND PROTRUDING 1' HIGH. THERE IS A RED T-POST 2' NORTH OF THE MONUMENT PROTRUDING 5' HIGH.

THIS MONUMENT IS FOR:  
 T16S R9E  
 S16 S15  
 S21 S22  
 1940  
 SLB&M

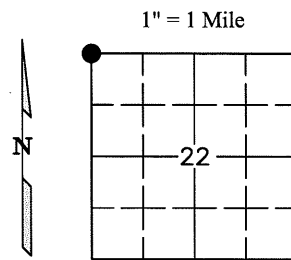


SCALE 1"=20'  
 (EXCEPT IN TRIVIAL CASES)  
 BEARINGS ARE RELATED TO WGS 84 WITH GPS OBSERVATIONS  
 DRAWN BY: AMM  
 11/19/2012  
 P.C. M. ANDERSON

**CERTIFICATION**

This is to certify that I was in responsible charge of the surveying work described in this record and that to the best of my knowledge the information presented herein is true and correct.

Surveyor's Name (Please Print): Robert L. Kay  
 Firm Name: UELS, LLC  
 Firm Address: 85 SOUTH 200 EAST, VERNAL, UTAH 84078  
 Phone: 435-789-1017 Utah License Number: 161319



● = Location of Monument

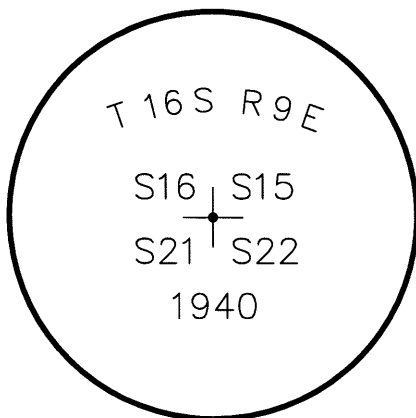


Corner CORNER COMMON TO 4 SECTIONS  
 Name: NORTHWEST CORNER OF SECTION 22

Signature/Date through Seal

SEC 22 T 16S R 9E, S.L. B&M.  
 COUNTY EMERY INDEX REF NUMBER 13-N

Not to scale



Stamping on Cap

- a. Date of field Work to Establish, Restore or Rehabilitate Monument: 11/14/2012
- b. Date Monument was used as a Control corner: 11/14/2012

# UTAH LAND SURVEY MONUMENT RECORD

• TYPE OF MONUMENT:  SECTION CORNER  QUARTER CORNER  SIXTEENTH CORNER  OTHER \_\_\_\_\_

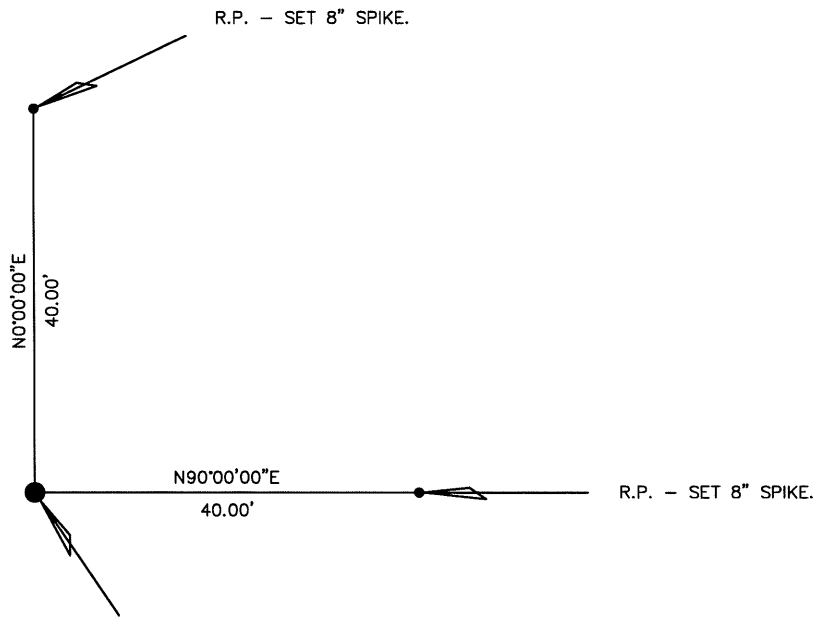
• DESCRIPTION AND DATE OF MONUMENT FOUND:

ON THE DATE OF 11/14/2012 WE FOUND THE MONUMENT FOR THIS 1/4 CORNER OF MAXIMUM CONTROL WHICH IS A 1940 2.25" G.L.O. BRASS CAP PROTRUDING 1.5' ABOVE THE GROUND. THERE IS A PILE OF STONES SURROUNDING THE BASE OF THE MONUMENT WHICH MEASURES 3' IN DIAMETER AND PROTRUDING 1.5' HIGH.

• DESCRIPTION OF MONUMENT SET BY YOU TO PERPETUATE THE LOCATION OF THIS POINT:

SET REFERENCE POINTS FOR THE CORNER AS SHOWN.

• SKETCH SHOWING RELATIVE LOCATION OF MONUMENT, ACCESSORIES AND REFERENCE POINTS STATING WHETHER FOUND OR SET, SHOW SUPPORTING AND/OR CONTRADICTORY EVIDENCE WHERE APPLICABLE:



THE MONUMENT FOR THIS 1/4 CORNER OF MAXIMUM CONTROL IS A 1940 2.25" G.L.O. BRASS CAP PROTRUDING 1.5' ABOVE THE GROUND. THERE IS A PILE OF STONES SURROUNDING THE BASE OF THE MONUMENT WHICH MEASURES 3' IN DIAMETER AND PROTRUDING 1.5' HIGH.

THIS MONUMENT IS FOR:  
 T16S R9E  
 1/4  
 S21 | S22  
 1940  
 SLB&M



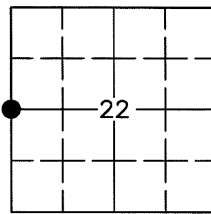
SCALE 1"=20'  
 (EXCEPT IN TRIVIAL CASES)  
 BEARINGS ARE RELATED TO WGS 84 WITH GPS OBSERVATIONS  
 DRAWN BY: AMM  
 11/20/2012  
 P.C. M. ANDERSON

**CERTIFICATION**

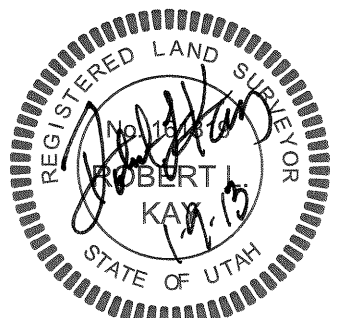
This is to certify that I was in responsible charge of the surveying work described in this record and that to the best of my knowledge the information presented herein is true and correct.

Surveyor's Name (Please Print): Robert L. Kay  
 Firm Name: UELS, LLC  
 Firm Address: 85 SOUTH 200 EAST, VERNAL, UTAH 84078  
 Phone: 435-789-1017 Utah License Number: 161319

1" = 1 Mile



● = Location of Monument

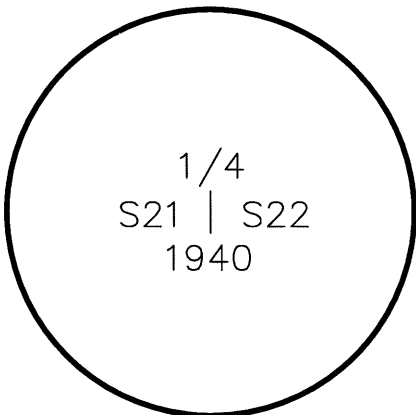


Corner 1/4 CORNER OF MAXIMUM CONTROL  
 Name: WEST 1/4 CORNER OF SECTION 22

Signature/Date through Seal

SEC 22 T 16S R 9E, S.L. B&M.  
 COUNTY EMERY INDEX REF NUMBER 13-L

Not to scale



Stamping on Cap

- a. Date of field Work to Establish, Restore or Rehabilitate Monument: 11/14/2012
- b. Date Monument was used as a Control corner: 11/14/2012