

### PLSS GPS Observation Sheet

Project Name <b>SL T16S R10E</b> <small>(Meridian Township Range)</small>				Township			½ (2)	N S	Range			½ (2)	E W	Section			Meridian															
				T	1	6		S	1	0		E				(SL)	US															
Contacts Name <b>Lee M. Swasey</b>				Source Agency <b>JOHANSEN &amp; TUTTLE ENGINEERING</b>								Date <b>11/16/05</b>																				
Contacts Phone <b>(435) 381-2523</b>																																
Control Station																																
Name <b>ELM GPS 12</b>				Type COR HARN TRI <u>Other</u> <b>EMERY COUNTY</b>								Accuracy Order																				
USGS Quad Name <b>OLSEN RESERVOIR UTAH</b>				Datum Nad27 Nad83 <u>Nad83 (1994)</u> WGS84 Local								State <b>UTAH</b> County <b>EMERY</b>																				
Latitude									Longitude																							
N	3	9	-	2	3	-	2	5	.	4	2	8	1	2	7	W	1	1	0	-	4	5	-	0	1	.	5	8	6	1	0	
Northing									Easting																							
6	9	4	7	5	8	7	.	6	3								1	8	5	2	2	5	7	.	0	6						
Units Survey Foot <u>International Foot</u> Meter				Coordinate Type <u>State Plane</u> UTM				Zone Utah North <u>Utah Central</u> Utah South				Vertical Datum NGVD29 <u>NAVD88</u>				Ellipsoid Height <b>1711.15 M</b> FT				Geoid Height <b>M 5671.75 FT</b>												
Base Receiver																																
Type <b>TRIMBLE</b>				Model <b>4000 SSI</b>				Serial Number																								
Logging Interval <b>5 SEC.</b>				Elevation Mask <b>13</b>				PDOP Mask <b>6</b>				Antenna Type <b>L1/L2 w/GROUND PLANE</b>																				
Start Time				AM PM				End Time				AM PM																				
Antenna Height																																
Session Beginning				1" M 2 <sup>nd</sup> M 3 <sup>rd</sup> M				Ave <b>4.659 Feet M</b>																								
Session End				1" M 2 <sup>nd</sup> M 3 <sup>rd</sup> M				Ave <b>M</b>																								
Rover Receiver																																
Type <b>TRIMBLE</b>				Model <b>5800</b>				Serial Number <b>4253117118</b>																								
Approximate Distance From Base Station				Miles				Antenna Type <b>5800 INTERNAL</b>				Antenna Height <b>6.6 FT</b>																				
Station Observation																																
Observation Type <u>RTK</u> FAST STATIC STATIC OTHER				First Observation																												
Station Name (M1)				6 0 0 3 0 0				Description <b>NE corner Sec. 26</b>																								
Occupation time				PDOP Best				RMS Best																								
Number of Measurements <b>60</b>				PDOP Worst <b>1.9</b>				RMS Worst <b>17.5</b>																								
Second Observation																																
Station Name (M2)				Description																												
Occupation time				PDOP Best				RMS Best																								
Number of Measurements				PDOP Worst				RMS Worst																								
Inverse Distance Between M1 and M2				FT				Alternate Base Station Used				Yes No																				
Monument and Markings																																
Type / Size																																
Stone				Pipe/Cap				Post				Other																				
Size				Size <b>2½ / 3¼ 1969 BLM</b>				Size				Size																				
Material				Material <b>steel / brass</b>				Material				Material																				

Sketch/Rubbing or Attach Photo of GPS Station Occupied  
Show rotation of stampings/markings relative to North and describe briefly

See Emery County Land Survey Monument Record Sheet 1610600300

# EMERY COUNTY LAND SURVEY MONUMENT RECORD

Date of field work: 11-16-05

County Reference No. 1610600300

Type of Monument:  Section Corner  
 Bench Mark

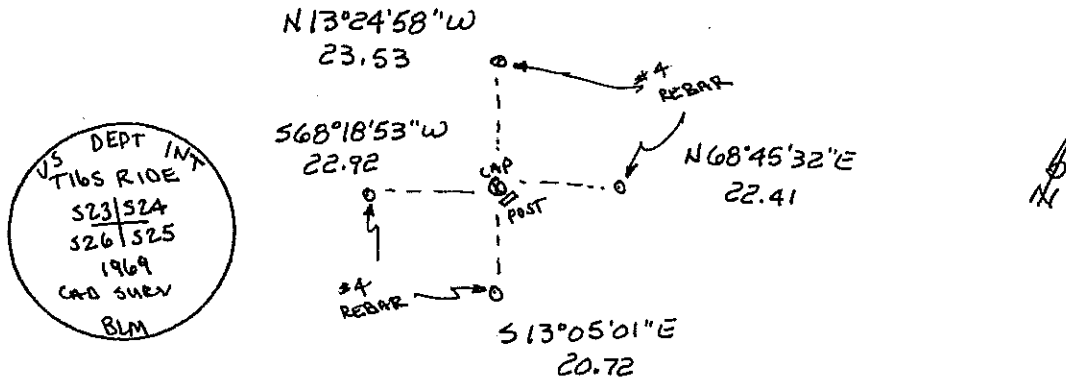
Quarter Corner  
 Other \_\_\_\_\_

Your Description and Observation of Monument Found ( Be Specific ):

1969 BLM BRASS CAP 8" ABOVE GROUND LEVEL WITH A STEEL FENCE POST DRIVEN ALONGSIDE

Description of Monument, Reference Monument or Accessories Established by You to Perpetuate the Location of this Point: SET 4 #4 REBAR AS SHOWN BELOW

Sketch showing Relative Location of Monument Accessories and Two Reference Points Stating Whether Found or Set. Show Supporting and/or Contradictory Evidence where Applicable. Include North Arrow.



Certification:

Firm name and/or Surveyor: Johansen & Tuttle Eng.

Address: 90 S. 100 E. Castle Dale, Utah 84513 Phone: (435) 381-2523

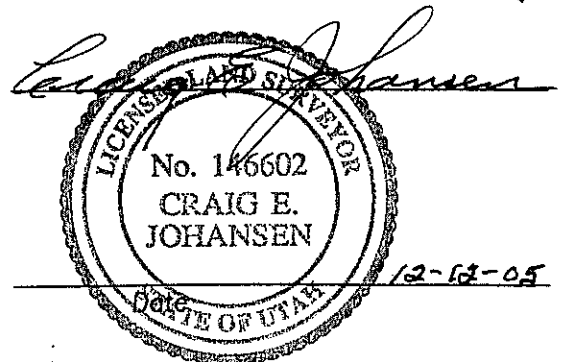
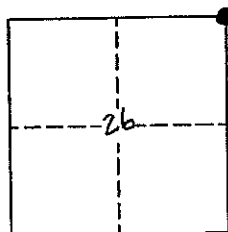
This is to certify that I was in responsible charge of the surveying work described in this record and that to the best of my knowledge the information presented herein is true and correct.

Location Diagram:

Section: 26

Township: 16S

Range: 10E



## PLSS GPS Observation Sheet

Project Name <b>SL T16S R10E</b> (Meridian Township Range)				Township <b>T 1 6</b>			Range <b>1 0</b>		Section <b>(SL) US</b>		Meridian <b>US</b>																					
Contacts Name <b>Lee M. Swasey</b>				Source Agency <b>JOHANSEN &amp; TUTTLE ENGINEERING</b>					Date <b>11/16/05</b>																							
Contacts Phone <b>(435) 381-2523</b>																																
Control Station																																
Name <b>ELM GPS 12</b>				Type <b>Other EMERY COUNTY</b>				Accuracy <b>Order</b>																								
USGS Quad Name <b>OLSEN RESERVOIR UTAH</b>				Datum <b>Nad83 (1994)</b>				State <b>UTAH</b>																								
				Nad27		Nad83		WGS84		Local																						
County <b>EMERY</b>																																
Latitude						Longitude																										
N	3	9	-	2	3	-	2	5	.	4	2	8	1	2	7	W	1	1	0	-	4	5	-	0	1	.	5	8	6	1	0	
Northing						Easting																										
6	9	4	7	5	8	7	.	6	3								1	8	5	2	2	5	7	.	0	6						
Units <b>Survey Foot</b> <input type="radio"/> <b>International Foot</b> <input checked="" type="radio"/> <b>Meter</b> <input type="radio"/>				Coordinate Type <b>State Plane</b> <input type="radio"/> <b>UTM</b> <input type="radio"/>																												
Zone <b>Utah North</b> <input type="radio"/> <b>Utah Central</b> <input checked="" type="radio"/> <b>Utah South</b> <input type="radio"/>				Vertical Datum <b>NGVD29</b> <input type="radio"/> <b>NAVD88</b> <input checked="" type="radio"/>																												
Ellipsoid Height <b>1711.15 M</b>				FT				Geoid Height <b>M</b>				<b>5671.75 FT</b>																				
Base Receiver																																
Type <b>TRIMBLE</b>				Model <b>4000 SSI</b>				Serial Number																								
Logging Interval <b>5 SEC.</b>		Elevation Mask <b>13</b>		PDOP Mask <b>6</b>		Antenna Type <b>L1/L2 w/GROUND PLANE</b>																										
Start Time				AM		PM		End Time				AM		PM																		
Antenna Height																																
Session Beginning		1"		M		2"		M		3"		M		Ave		<b>4.659 Feet M</b>																
Session End		1"		M		2"		M		3"		M		Ave		<b>M</b>																
Rover Receiver																																
Type <b>TRIMBLE</b>				Model <b>5800</b>				Serial Number <b>4253117118</b>																								
Approximate Distance From Base Station				Miles		Antenna Type <b>5800 INTERNAL</b>				Antenna Height <b>6.6 FT</b>																						
Station Observation																																
Observation Type <input checked="" type="radio"/> <b>RTK</b>				<input type="radio"/> <b>FAST STATIC</b>				<input type="radio"/> <b>STATIC</b>				<input type="radio"/> <b>OTHER</b>																				
First Observation																																
Station Name (M1)				<b>6 0 0 2 4 0</b>		Description <b>E 1/4 corner Sec. 26</b>																										
Occupation time				PDOP Best				RMS Best																								
Number of Measurements <b>60</b>				PDOP Worst <b>1.3</b>				RMS Worst <b>12.9</b>																								
Second Observation																																
Station Name (M2)				Description																												
Occupation time				PDOP Best				RMS Best																								
Number of Measurements				PDOP Worst				RMS Worst																								
Inverse Distance Between M1 and M2				FT		Alternate Base Station Used				Yes No																						
Monument and Markings																																
Type / Size																																
Stone			Pipe/Cap			Post			Other																							
Size			Size <b>2 1/2 / 3 1/4 1969 BLM</b>			Size			Size																							
Material			Material <b>steel / brass</b>			Material			Material																							

Sketch/Rubbing or Attach Photo of GPS Station Occupied  
Show rotation of stampings/markings relative to North and describe briefly

See Emery County Land Survey Monument Record Sheet 1610600240

# EMERY COUNTY LAND SURVEY MONUMENT RECORD

Date of field work: 11-16-05

County Reference No. 1610600240

Type of Monument:  Section Corner  
 Bench Mark

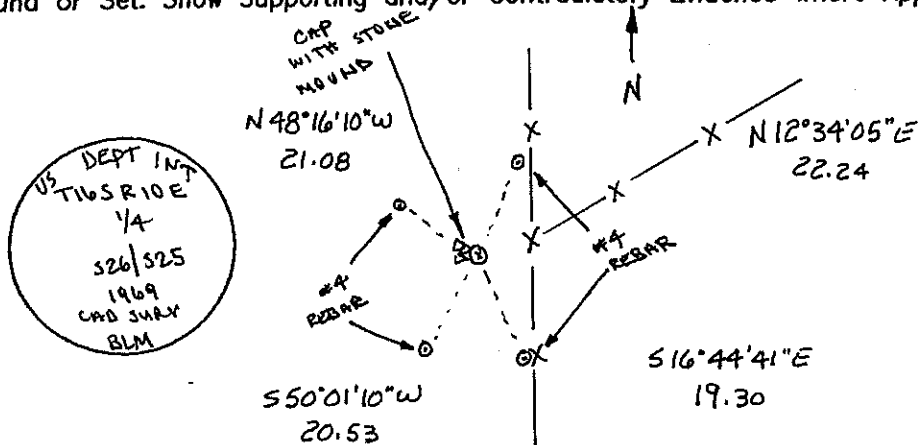
Quarter Corner  
 Other \_\_\_\_\_

Your Description and Observation of Monument Found ( Be Specific ):

1969 BLM BRASS CAP 6" ABOVE GROUNDLEVEL WITH A SMALL STONE MOUND

Description of Monument, Reference Monument or Accessories Established by You to Perpetuate the Location of this Point: SET 4 #4 REBAR AS SHOWN BELOW

Sketch showing Relative Location of Monument Accessories and Two Reference Points Stating Whether Found or Set. Show Supporting and/or Contradictory Evidence where Applicable. Include North Arrow.



Certification:

Firm name and/or Surveyor: Johansen & Tuttle Eng.

Address: 90 S. 100 E. Castle Dale, Utah 84513 Phone: (435) 381-2523

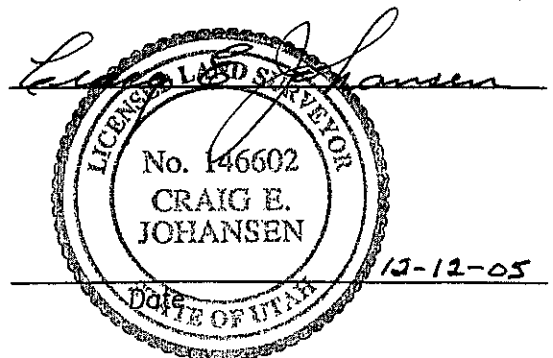
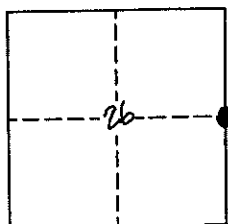
This is to certify that I was in responsible charge of the surveying work described in this record and that to the best of my knowledge the information presented herein is true and correct.

Location Diagram:

Section: 26

Township: 16S

Range: 10E



### PLSS GPS Observation Sheet

Project Name <b>SL T16S R10E</b> (Meridian Township Range)		Township T 1 6		1/2 (2) S	N S	Range 1 0		1/2 (2) E	E W	Section		Meridian (SL) US																			
Contacts Name <b>Lee M. Swasey</b>		Source Agency <b>JOHANSEN &amp; TUTTLE ENGINEERING</b>						Date <b>11/10/05</b>																							
Contacts Phone <b>(435) 381-2523</b>																															
Control Station																															
Name <b>ELM GPS 12</b>		COR		HARN		TRI		Type Other <b>EMERY COUNTY</b>			Accuracy Order																				
USGS Quad Name <b>OLSEN RESERVOIR UTAH</b>		Nad27		Nad83		Datum (Nad83 (1994))		WGS84		Local		State <b>UTAH</b>																			
												County <b>EMERY</b>																			
Latitude						Longitude																									
N	3	9	-	2	3	-	2	5	.	4	2	8	1	2	7	W	1	1	0	-	4	5	-	0	1	.	5	8	6	1	0
Northing													Easting																		
6	9	4	7	5	8	7	.	6	3							1	8	5	2	2	5	7	.	0	6						
Units		Survey Foot		International Foot		Meter		Coordinate Type			State Plane		UTM																		
Zone		Utah North		Utah Central		Utah South		Vertical Datum			NGVD29		NAVD88																		
Ellipsoid Height		1711.15 M		FT		Geoid Height			M		5671.75 FT																				
Base Receiver																															
Type <b>TRIMBLE</b>		Model <b>4000 SSI</b>				Serial Number																									
Logging Interval <b>5 SEC.</b>		Elevation Mask <b>13</b>		PDOP Mask <b>6</b>		Antenna Type <b>L1/L2 w/GROUND PLANE</b>																									
Start Time		AM		PM		End Time						AM		PM																	
Antenna Height																															
Session Beginning		1"		M		2"		M		3"		M		Ave <b>4.718 Feet M</b>																	
Session End		1"		M		2"		M		3"		M		Ave <b>M</b>																	
Rover Receiver																															
Type <b>TRIMBLE</b>		Model <b>5800</b>				Serial Number <b>4253117118</b>																									
Approximate Distance From Base Station		Miles		Antenna Type <b>5800 INTERNAL</b>						Antenna Height <b>6.6 FT</b>																					
Station Observation																															
Observation Type		(RTK)		FAST STATIC		STATIC		OTHER																							
First Observation																															
Station Name (M1)		6 0 0 2 0 0		Description <b>SE corner Sec. 26</b>																											
Occupation time		PDOP Best				RMS Best																									
Number of Measurements <b>60</b>		PDOP Worst <b>1.5</b>				RMS Worst <b>9.7</b>																									
Second Observation																															
Station Name (M2)		Description																													
Occupation time		PDOP Best				RMS Best																									
Number of Measurements		PDOP Worst				RMS Worst																									
Inverse Distance Between M1 and M2		FT		Alternate Base Station Used						Yes No																					
Monument and Markings																															
Type / Size																															
Stone		Pipe/Cap				Post				Other																					
Size		Size <b>2 1/2 / 3 1/4 1969 BLM</b>				Size				Size																					
Material		Material <b>steel / brass</b>				Material				Material																					

Sketch/Rubbing or Attach Photo of GPS Station Occupied  
Show rotation of stampings/markings relative to North and describe briefly

See Emery County Land Survey Monument Record Sheet 1610600200

# EMERY COUNTY LAND SURVEY MONUMENT RECORD

Date of field work: 11-10-05

County Reference No. 1610600200

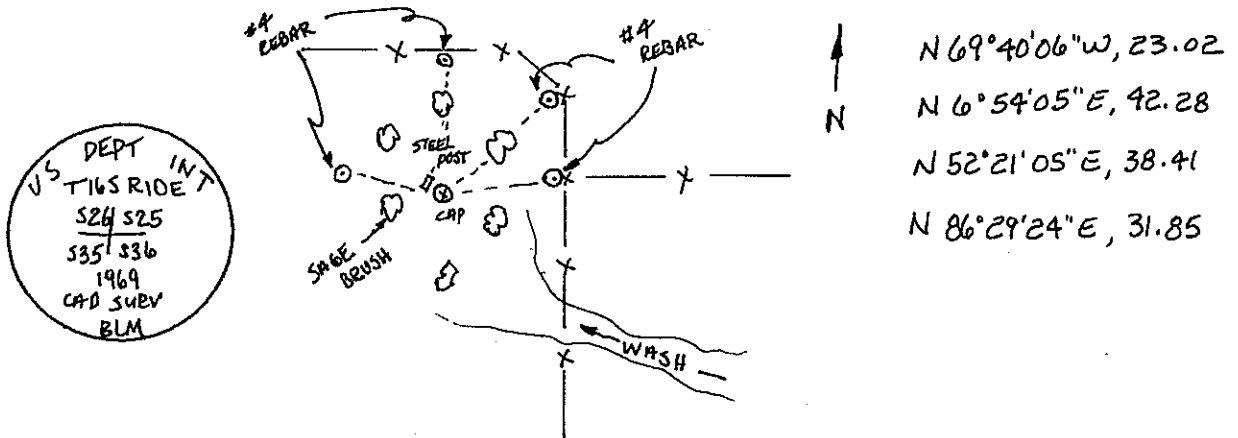
Type of Monument:  Section Corner  
 Bench Mark

Quarter Corner  
 Other \_\_\_\_\_

Your Description and Observation of Monument Found ( Be Specific ):  
 1969 BLM BRASS CAP 7" ABOVE GROUND LEVEL WITH A STEEL POST DRIVEN ALONGSIDE.  
 CAP IS IN THICK SAGE BRUSH.

Description of Monument, Reference Monument or Accessories Established by You to Perpetuate the Location of this Point: SET 4 #4 REBAR AS SHOWN BELOW

Sketch showing Relative Location of Monument Accessories and Two Reference Points Stating Whether Found or Set. Show Supporting and/or Contradictory Evidence where Applicable. Include North Arrow.



Certification:

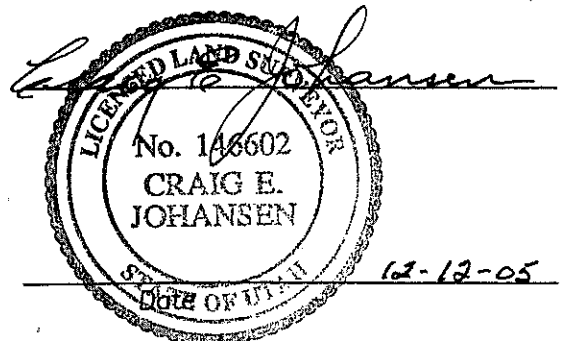
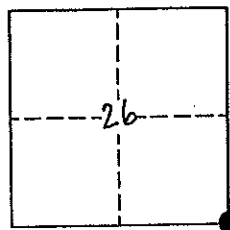
Firm name and/or Surveyor: Johansen & Tuttle Eng.

Address: 90 S. 100 E. Castle Dale, Utah 84513 Phone: (435) 381-2523

This is to certify that I was in responsible charge of the surveying work described in this record and that to the best of my knowledge the information presented herein is true and correct.

Location Diagram:

Section: 26  
 Township: 16S  
 Range: 10E



## PLSS GPS Observation Sheet

Project Name <b>SL T16S R10E</b> (Meridian Township Range)		Township T 1 6		½ (2)	N S	Range 1 0		½ (2)	E W	Section		Meridian (SL) US																				
Contacts Name <b>Lee M. Swasey</b>		Source Agency <b>JOHANSEN &amp; TUTTLE ENGINEERING</b>						Date <b>11/16/05</b>																								
Contacts Phone <b>(435) 381-2523</b>																																
Control Station																																
Name <b>ELM GPS 12</b>		Type COR HARN TRI <u>Other</u> <b>EMERY COUNTY</b>						Accuracy Order																								
USGS Quad Name <b>OLSEN RESERVOIR UTAH</b>		Datum Nad27 Nad83 <u>(Nad83 (1994))</u> WGS84 Local						State <b>UTAH</b> County <b>EMERY</b>																								
Latitude						Longitude																										
N	3	9	-	2	3	-	2	5	.	4	2	8	1	2	7	W	1	1	0	-	4	5	-	0	1	.	5	8	6	1	0	
Northing						Easting																										
6	9	4	7	5	8	7	.	6	3							1	8	5	2	2	5	7	.	0	6							
Units Survey Foot <u>International Foot</u> Meter						Coordinate Type <u>State Plane</u> UTM																										
Zone Utah North <u>Utah Central</u> Utah South						Vertical Datum NGVD29 <u>NAVD88</u>																										
Ellipsoid Height <b>1711.15 M</b> FT						Geoid Height <b>M</b> <b>5671.75 FT</b>																										
Base Receiver																																
Type <b>TRIMBLE</b>			Model <b>4000 SSI</b>				Serial Number																									
Logging Interval <b>5 SEC.</b>		Elevation Mask <b>13</b>		PDOP Mask <b>6</b>		Antenna Type <b>L1/L2 w/GROUND PLANE</b>																										
Start Time			AM PM			End Time			AM PM																							
Antenna Height																																
Session Beginning		1" M		2 <sup>nd</sup> M		3 <sup>rd</sup> M		Ave		4.659 Feet M																						
Session End		1" M		2 <sup>nd</sup> M		3 <sup>rd</sup> M		Ave		M																						
Rover Receiver																																
Type <b>TRIMBLE</b>			Model <b>5800</b>				Serial Number <b>4253117118</b>																									
Approximate Distance From Base Station			Miles		Antenna Type <b>5800 INTERNAL</b>				Antenna Height <b>6.6 FT</b>																							
Station Observation																																
Observation Type <u>(RTK)</u> FAST STATIC STATIC OTHER																																
First Observation																																
Station Name (M1)		5 6 0 2 0 0		Description <b>E 1/16 corner Sec. 26 / Sec. 35</b>																												
Occupation time		PDOP Best				RMS Best																										
Number of Measurements		60				PDOP Worst <b>2.1</b>				RMS Worst <b>6.4</b>																						
Second Observation																																
Station Name (M2)		Description																														
Occupation time		PDOP Best				RMS Best																										
Number of Measurements		PDOP Worst				RMS Worst																										
Inverse Distance Between M1 and M2						FT		Alternate Base Station Used			Yes No																					
Monument and Markings																																
Type / Size																																
Stone		Pipe/Cap				Post				Other																						
Size		Size <b>2½ / 3¼ 1969 BLM</b>				Size				Size																						
Material		Material <b>steel / brass</b>				Material				Material																						

Sketch/Rubbing or Attach Photo of GPS Station Occupied  
Show rotation of stampings/markings relative to North and describe briefly

See Emery County Land Survey Monument Record Sheet 1610560200

# EMERY COUNTY LAND SURVEY MONUMENT RECORD

Date of field work: 11-16-05

County Reference No. 1610560200

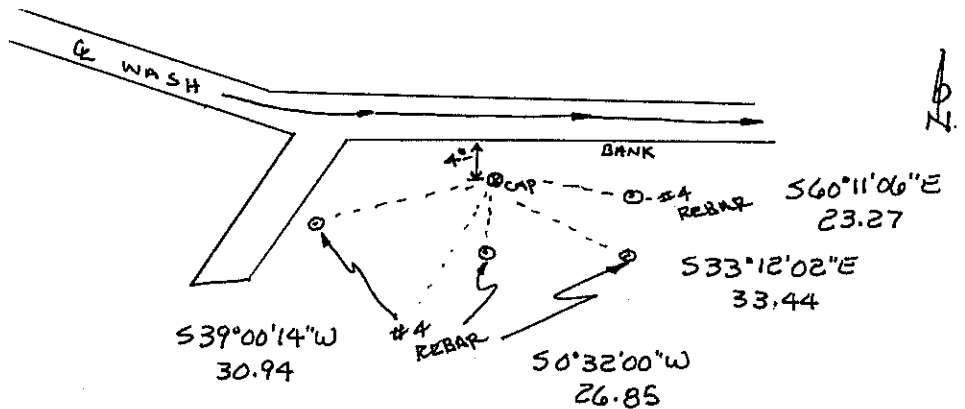
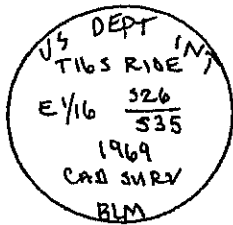
Type of Monument:  Section Corner  
 Bench Mark

Quarter Corner  
 Other 1/16 CORNER

Your Description and Observation of Monument Found ( Be Specific ):  
 1969 BLM BRASS CAP 7" ABOVE GROUND LEVEL

Description of Monument, Reference Monument or Accessories Established by You to Perpetuate the Location of this Point: SET 4 #4 REBAR AS SHOWN BELOW

Sketch showing Relative Location of Monument Accessories and Two Reference Points Stating Whether Found or Set. Show Supporting and/or Contradictory Evidence where Applicable. Include North Arrow.



Certification:

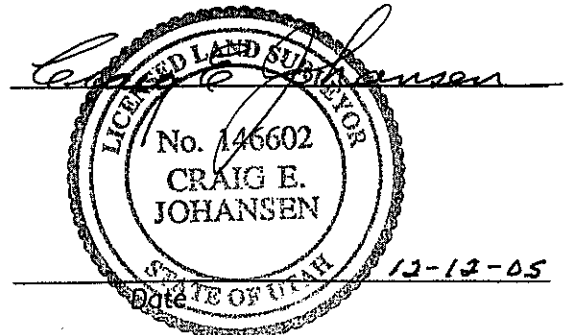
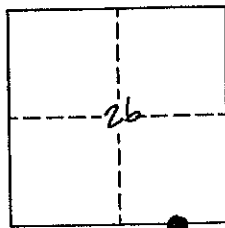
Firm name and/or Surveyor: Johansen & Tuttle Eng.

Address: 90 S. 100 E. Castle Dale, Utah 84513 Phone: (435) 381-2523

This is to certify that I was in responsible charge of the surveying work described in this record and that to the best of my knowledge the information presented herein is true and correct.

Location Diagram:

Section: 26  
 Township: 16S  
 Range: 10E





## PLSS GPS Observation Sheet

Project Name <b>SL T16S R10E</b> <small>(Meridian Township Range)</small>		Township <b>T 1 6</b>		1/2 <b>(2)</b>	N <b>S</b>	Range <b>1 0</b>		1/2 <b>(2)</b>	E <b>W</b>	Section		Meridian <b>(SL) US</b>																					
Contacts Name <b>Lee M. Swasey</b>		Source Agency <b>JOHANSEN &amp; TUTTLE ENGINEERING</b>						Date <b>11/16/05</b>																									
Contacts Phone <b>(435) 381-2523</b>																																	
Control Station																																	
Name <b>ELM GPS 12</b>		COR			HARN			TRI			Type <b>Other EMERY COUNTY</b>		Accuracy <b>Order</b>																				
USGS Quad Name <b>OLSEN RESERVOIR UTAH</b>		Nad27			Nad83			Datum <b>(Nad83 1994)</b>			WGS84		Local <b>State UTAH</b>																				
County <b>EMERY</b>																																	
Latitude						Longitude																											
<b>N</b>	<b>3</b>	<b>9</b>	<b>-</b>	<b>2</b>	<b>3</b>	<b>-</b>	<b>2</b>	<b>5</b>	<b>.</b>	<b>4</b>	<b>2</b>	<b>8</b>	<b>1</b>	<b>2</b>	<b>7</b>	<b>W</b>	<b>1</b>	<b>1</b>	<b>0</b>	<b>-</b>	<b>4</b>	<b>5</b>	<b>-</b>	<b>0</b>	<b>1</b>	<b>.</b>	<b>5</b>	<b>8</b>	<b>6</b>	<b>1</b>	<b>0</b>		
Northing						Easting																											
<b>6</b>	<b>9</b>	<b>4</b>	<b>7</b>	<b>5</b>	<b>8</b>	<b>7</b>	<b>.</b>	<b>6</b>	<b>3</b>								<b>1</b>	<b>8</b>	<b>5</b>	<b>2</b>	<b>2</b>	<b>5</b>	<b>7</b>	<b>.</b>	<b>0</b>	<b>6</b>							
Units <b>Survey Foot</b>		<b>International Foot</b>		<b>Meter</b>		Coordinate Type <b>State Plane</b>				<b>UTM</b>																							
Zone <b>Utah North</b>		<b>Utah Central</b>		<b>Utah South</b>		Vertical Datum <b>NGVD29</b>				<b>NAVD88</b>																							
Ellipsoid Height <b>1711.15 M</b>		<b>FT</b>		Geoid Height <b>M</b>				<b>5671.75 FT</b>																									
Base Receiver																																	
Type <b>TRIMBLE</b>				Model <b>4000 SSI</b>				Serial Number																									
Logging Interval <b>5 SEC.</b>		Elevation Mask <b>13</b>		PDOP Mask <b>6</b>		Antenna Type <b>L1/L2 w/GROUND PLANE</b>																											
Start Time <b>AM PM</b>				End Time <b>AM PM</b>				Antenna Height																									
Session Beginning <b>1"</b>		<b>M</b>		<b>2<sup>nd</sup></b>		<b>M</b>		<b>3<sup>rd</sup></b>		<b>M</b>		Ave <b>4.659 Feet M</b>																					
Session End <b>1"</b>		<b>M</b>		<b>2<sup>nd</sup></b>		<b>M</b>		<b>3<sup>rd</sup></b>		<b>M</b>		Ave <b>M</b>																					
Rover Receiver																																	
Type <b>TRIMBLE</b>				Model <b>5800</b>				Serial Number <b>4253117118</b>																									
Approximate Distance From Base Station <b>Miles</b>				Antenna Type <b>5800 INTERNAL</b>				Antenna Height <b>6.6 FT</b>																									
Station Observation																																	
Observation Type <b>RTK</b>		<b>FAST STATIC</b>		<b>STATIC</b>		<b>OTHER</b>																											
First Observation																																	
Station Name (M1) <b>5 4 0 3 0 0</b>		Description <b>N 1/4 corner Sec. 26</b>																															
Occupation time		PDOP Best				RMS Best																											
Number of Measurements <b>60</b>		PDOP Worst <b>1.6</b>				RMS Worst <b>16.1</b>																											
Second Observation																																	
Station Name (M2)		Description																															
Occupation time		PDOP Best				RMS Best																											
Number of Measurements		PDOP Worst				RMS Worst																											
Inverse Distance Between M1 and M2 <b>FT</b>				Alternate Base Station Used <b>Yes No</b>																													
Monument and Markings																																	
Type / Size																																	
Stone			Pipe/Cap				Post			Other																							
Size			Size <b>2 1/2 / 3/4 1969 BLM</b>				Size			Size																							
Material			Material <b>steel / brass</b>				Material			Material																							

Sketch/Rubbing or Attach Photo of GPS Station Occupied  
Show rotation of stampings/markings relative to North and describe briefly

See Emery County Land Survey Monument Record Sheet 1610540300

# EMERY COUNTY LAND SURVEY MONUMENT RECORD

Date of field work: 11-16-05

County Reference No. 1610 540300

Type of Monument: \_\_\_\_\_ Section Corner  
\_\_\_\_\_ Bench Mark

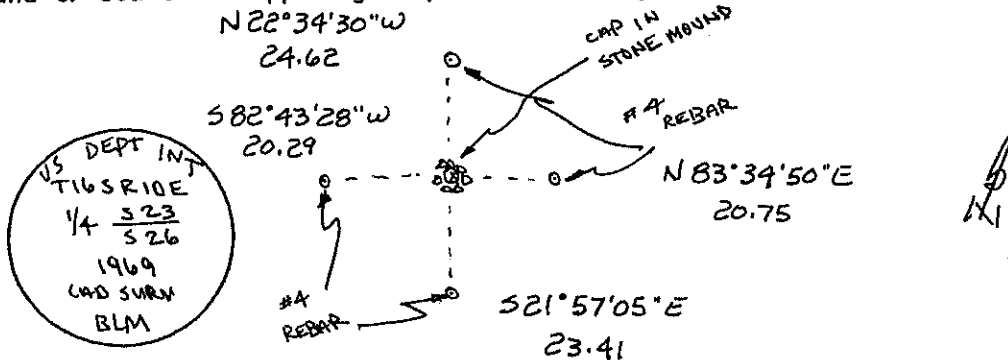
Quarter Corner  
\_\_\_\_\_ Other \_\_\_\_\_

Your Description and Observation of Monument Found ( Be Specific ):

1969 BLM BRASS CAP 6" ABOVE GROUNDLEVEL IN A STONE MOUND

Description of Monument, Reference Monument or Accessories Established by You to Perpetuate the Location of this Point: SET 4 #4 REBAR AS SHOWN BELOW

Sketch showing Relative Location of Monument Accessories and Two Reference Points Stating Whether Found or Set. Show Supporting and/or Contradictory Evidence where Applicable. Include North Arrow.



Certification:

Firm name and/or Surveyor: Johansen & Tuttle Eng.

Address: 90 S. 100 E. Castle Dale, Utah 84513 Phone: (435) 381-2523

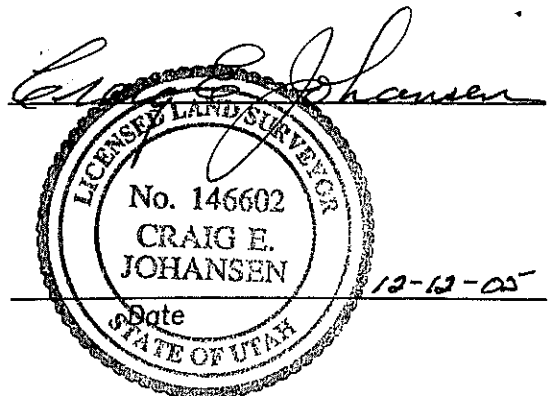
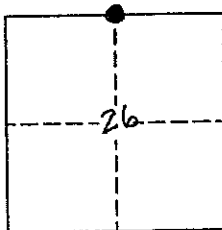
This is to certify that I was in responsible charge of the surveying work described in this record and that to the best of my knowledge the information presented herein is true and correct.

Location Diagram:

Section: 26

Township: 16 S

Range: 10 E



## PLSS GPS Observation Sheet

Project Name <b>SL T16S R10E</b> (Meridian Township Range)			Township T 1 6			Range S 1 0		Section E W E		Meridian <b>SL</b> US																						
Contacts Name <b>Lee M. Swasey</b>			Source Agency <b>JOHANSEN &amp; TUTTLE ENGINEERING</b>					Date <b>11/16/05</b>																								
Contacts Phone <b>(435) 381-2523</b>																																
Control Station																																
Name <b>ELM GPS 12</b>			Type COR HARN TRI <b>Other</b> EMERY COUNTY					Accuracy Order																								
USGS Quad Name <b>OLSEN RESERVOIR UTAH</b>			Datum Nad27 Nad83 <b>Nad83 (1994)</b> WGS84 Local					State <b>UTAH</b> County <b>EMERY</b>																								
Latitude						Longitude																										
N	3	9	-	2	3	-	2	5	.	4	2	8	1	2	7	W	1	1	0	-	4	5	-	0	1	.	5	8	6	1	0	
Northing						Easting																										
6	9	4	7	5	8	7	.	6	3								1	8	5	2	2	5	7	.	0	6						
Units Survey Foot <b>International Foot</b> Meter			Coordinate Type <b>State Plane</b> UTM			Zone Utah North <b>Utah Central</b> Utah South			Vertical Datum NGVD29 <b>NAVD88</b>			Ellipsoid Height <b>1711.15 M</b> FT			Geoid Height <b>M</b> <b>5671.75 FT</b>																	
Base Receiver																																
Type <b>TRIMBLE</b>			Model <b>4000 SSI</b>			Serial Number																										
Logging Interval <b>5 SEC.</b>		Elevation Mask <b>13</b>		PDOP Mask <b>6</b>		Antenna Type <b>L1/L2 w/GROUND PLANE</b>																										
Start Time AM PM			End Time AM PM			Antenna Height																										
Session Beginning		1 <sup>st</sup> M		2 <sup>nd</sup> M		3 <sup>rd</sup> M		Ave <b>4.659 Feet M</b>																								
Session End		1 <sup>st</sup> M		2 <sup>nd</sup> M		3 <sup>rd</sup> M		Ave <b>M</b>																								
Rover Receiver																																
Type <b>TRIMBLE</b>			Model <b>5800</b>			Serial Number <b>4253117118</b>																										
Approximate Distance From Base Station Miles			Antenna Type <b>5800 INTERNAL</b>			Antenna Height <b>6.6 FT</b>																										
Station Observation																																
Observation Type <b>RTK</b> FAST STATIC STATIC OTHER			First Observation																													
Station Name (M1) <b>5 4 0 2 0 0</b>			Description <b>S 1/4 corner Sec. 26</b>																													
Occupation time			PDOP Best			RMS Best																										
Number of Measurements <b>60</b>			PDOP Worst <b>2.3</b>			RMS Worst <b>11.3</b>																										
Second Observation																																
Station Name (M2)			Description																													
Occupation time			PDOP Best			RMS Best																										
Number of Measurements			PDOP Worst			RMS Worst																										
Inverse Distance Between M1 and M2			FT			Alternate Base Station Used			Yes No																							
Monument and Markings																																
Type / Size																																
Stone			Pipe/Cap			Post			Other																							
Size			Size <b>2½ / 3¼ 1969 BLM</b>			Size			Size																							
Material			Material <b>steel / brass</b>			Material			Material																							

Sketch/Rubbing or Attach Photo of GPS Station Occupied  
Show rotation of stampings/markings relative to North and describe briefly

See Emery County Land Survey Monument Record Sheet 1610540200

# EMERY COUNTY LAND SURVEY MONUMENT RECORD

Date of field work: 11-16-05

County Reference No. 1610540200

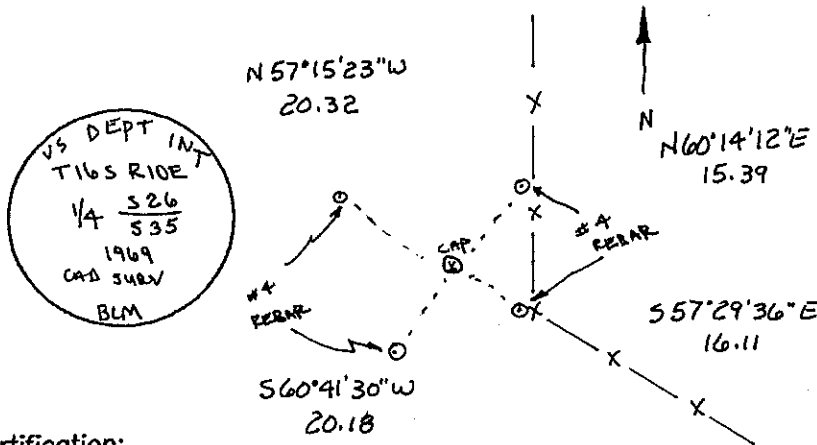
Type of Monument: \_\_\_\_\_ Section Corner  
 \_\_\_\_\_ Bench Mark

Quarter Corner  
 \_\_\_\_\_ Other \_\_\_\_\_

Your Description and Observation of Monument Found ( Be Specific ):  
1969 BLM BRASS CAP 8" ABOVE GROUND LEVEL

Description of Monument, Reference Monument or Accessories Established by You to Perpetuate the Location of this Point: SET 4 #4 REBAR AS SHOWN BELOW

Sketch showing Relative Location of Monument Accessories and Two Reference Points Stating Whether Found or Set. Show Supporting and/or Contradictory Evidence where Applicable. Include North Arrow.



Certification:

Firm name and/or Surveyor: Johansen & Tuttle Eng.

Address: 90 S. 100 E. Castle Dale, Utah 84513 Phone: (435) 381-2523

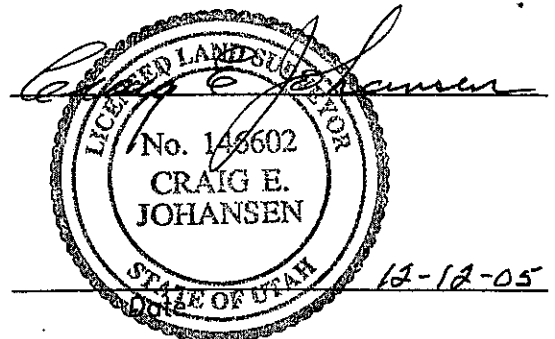
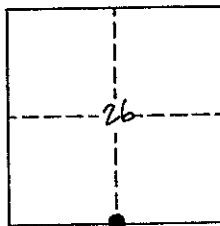
This is to certify that I was in responsible charge of the surveying work described in this record and that to the best of my knowledge the information presented herein is true and correct.

Location Diagram:

Section: 26

Township: 16 S

Range: 10E



# UTAH LAND SURVEY MONUMENT RECORD

County EMERY

1610  
County Reference No. 1016500240

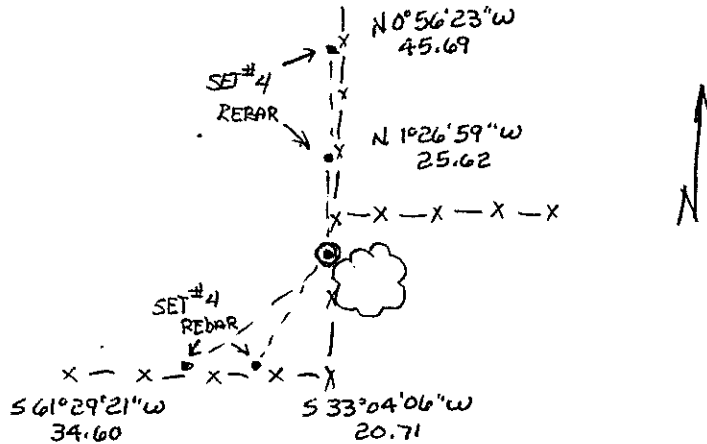
1. Date of Field Work: 12-20-00

2. Type of Monument:   
 (Check one)       Section Corner       Quarter Corner   
                           Bench Mark                       Other

3. Your Description and Observation of Monument Found (Be Specific):   
FOUND STD. BLM CAP AT a N-S-E FENCE CORNER ON THE NORTH SIDE OF A TALL DEAD COTTONWOOD TREE

4. Description of Monument, Reference Monument or Accessories Established by You to Perpetuate the Location of this Point: SET 2 #4 REBARs NORTH & 2 SOUTH WEST OF CAP

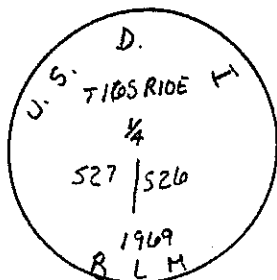
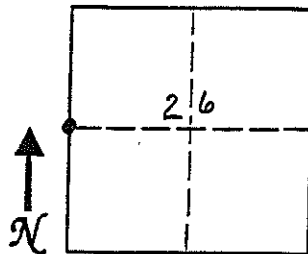
5. Sketch showing Relative Location of Monument Accessories and Two Reference Points Stating Whether Found or Set. Show Supporting and/or Contradictory Evidence where Applicable. Include North Arrow.



6. Certification:   
 Firm Name and/or Surveyor: JOHANSEN & TUTTLE ENG Phone: 381-2523   
 Address: 90 S 100 E CASTLE DALE UTAH

This is to certify that I was in responsible charge of the surveying work described in this record and that to the best of my knowledge the information presented herein is true and correct.

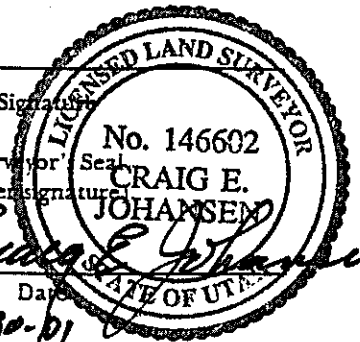
7. Location Diagram:   
 8. Section: 26   
 9. Township: 10 S   
 10. Range: 10 E



11. Monument Inscription:

12. Diagram Coordinate from Master Index for Townships: \_\_\_\_\_

Signature: \_\_\_\_\_   
 Surveyor's Seal (over signature)   
 Date: 11-30-01



Report one monument per form.   
 Type or use permanent black ink.   
 Fill in all items.

# UTAH LAND SURVEY MONUMENT RECORD

County EMERY

1610  
County Reference No. 1916 500 260

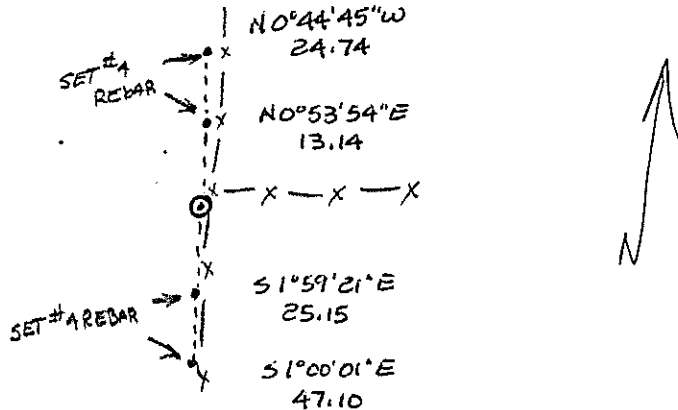
1. Date of Field Work: 12-20-00

2. Type of Monument: (Check one)  
 Section Corner       Quarter Corner  
 Bench Mark       Other 1/16 Cor

3. Your Description and Observation of Monument Found (Be Specific):  
FOUND STD BLM CAP AT A N-S-E FENCE CORNER

4. Description of Monument, Reference Monument or Accessories Established by You to Perpetuate the Location of this Point: SET 2 #4 REBARS N & 2 South of CAP

5. Sketch showing Relative Location of Monument Accessories and Two Reference Points Stating Whether Found or Set. Show Supporting and/or Contradictory Evidence where Applicable. Include North Arrow.



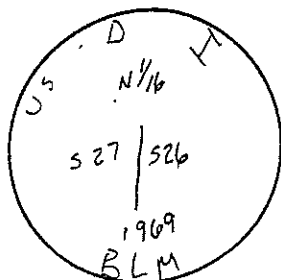
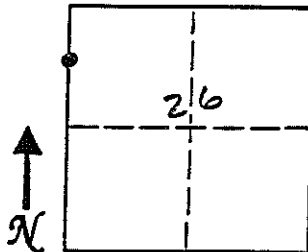
6. Certification:

Firm Name and/or Surveyor: JOHANSEN & TUTTLE ENG Phone: 381-2523  
 Address: 90 S 100 E CASTLE DALE UTAH

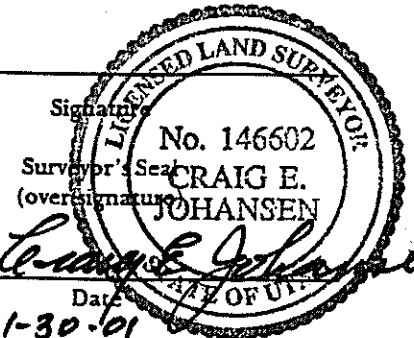
This is to certify that I was in responsible charge of the surveying work described in this record and that to the best of my knowledge the information presented herein is true and correct.

7. Location Diagram:

8. Section: 26  
 9. Township: 16 S  
 10. Range: 20 E



11. Monument Inscription:



12. Diagram Coordinate from Master Index for Townships: \_\_\_\_\_

Report one monument per form. Type or use permanent black ink. Fill in all items.

# UTAH LAND SURVEY MONUMENT RECORD

County EMERY

County Reference No. <sup>1610</sup>~~1016~~ 500 200

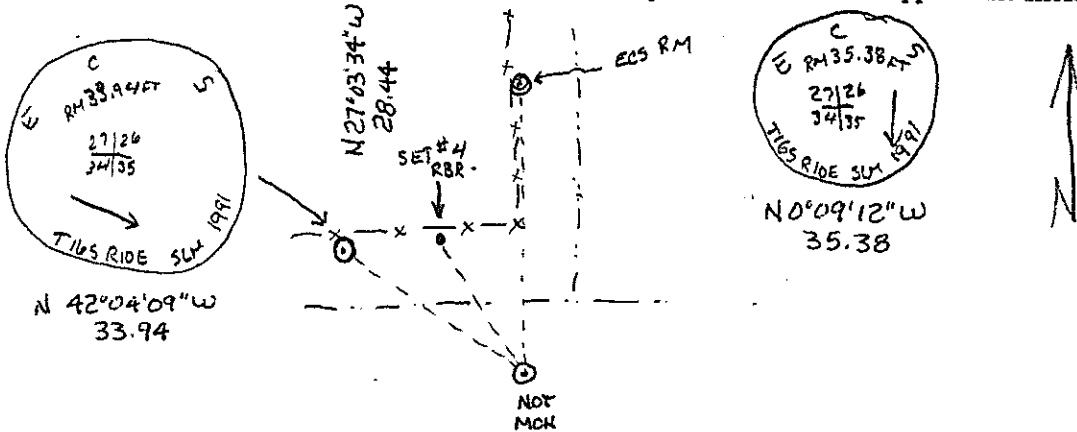
1. Date of Field Work: 12-20-00

2. Type of Monument:  Section Corner  Quarter Corner  
 (Check one)  Bench Mark  Other

3. Your Description and Observation of Monument Found (Be Specific):  
FOUND TWO ECS RM CAPS.

4. Description of Monument, Reference Monument or Accessories Established by You to Perpetuate the Location of this Point:  
SET A #4 REBAR NW & NORTH OF CORNER

5. Sketch showing Relative Location of Monument Accessories and Two Reference Points Stating Whether Found or Set. Show Supporting and/or Contradictory Evidence where Applicable. Include North Arrow.



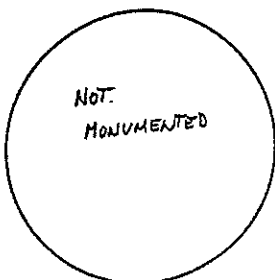
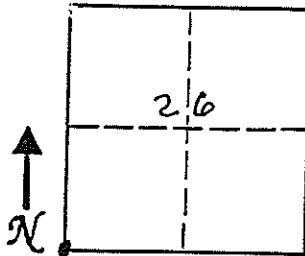
6. Certification:

Firm Name and/or Surveyor: JOHANSEN & TUTTLE ENG Phone: 381-2523  
 Address: 90 S 100 E CASTLEDALE UTAH

This is to certify that I was in responsible charge of the surveying work described in this record and that to the best of my knowledge the information presented herein is true and correct.

7. Location Diagram:

8. Section: 26  
 9. Township: 16 S  
 10. Range: 10 E



11. Monument Inscription:

12. Diagram Coordinate from Master Index for Townships: \_\_\_\_\_

Signature: \_\_\_\_\_  
 Surveyor's Seal (over signature)  
 No. 146602  
**CRAIG E. JOHANSEN**  
 DATE OF UTAH

11-30-01

Report one monument per form.  
 Type or use permanent black ink.  
 Fill in all items.