

## PLSS GPS Observation Sheet

Project Name <b>SL T18S R10E</b> (Meridian Township Range)		Township <b>T 1 8</b>		¼ (2)	N S	Range <b>1 0</b>		¼ (2)	E W	Section		Meridian <b>(SL) US</b>																				
Contacts Name <b>Lee M. Swasey</b>		Source Agency <b>JOHANSEN &amp; TUTTLE ENGINEERING</b>							Date <b>11/08/05</b>																							
Contacts Phone <b>(435) 381-2523</b>																																
Control Station																																
Name <b>ELM GPS 12</b>		COR		HARN		TRI		Type <b>Other EMERY COUNTY</b>		Accuracy Order																						
USGS Quad Name <b>OLSEN RESERVOIR UTAH</b>		Nad27		Nad83		Datum <b>Nad83 (1994)</b>		WGS84		Local		State <b>UTAH</b>																				
County <b>EMERY</b>																																
Latitude							Longitude																									
N	3	9	-	2	3	-	2	5	.	4	2	8	1	2	7	W	1	1	0	-	4	5	-	0	1	.	5	8	6	1	0	
Northing							Easting																									
6	9	4	7	5	8	7	.	6	3								1	8	5	2	2	5	7	.	0	6						
Units		Survey Foot		<u>International Foot</u>		Meter		Coordinate Type		<u>State Plane</u>		UTM																				
Zone		Utah North		<u>Utah Central</u>		Utah South		Vertical Datum		NGVD29		<u>NAVD88</u>																				
Ellipsoid Height		1711.15 M		FT		Geoid Height		M		5671.75 FT																						
Base Receiver																																
Type		TRIMBLE		Model		4000 SSI		Serial Number																								
Logging Interval		5 SEC.		Elevation Mask		13		PDOP Mask		6		Antenna Type		L1/L2 w/GROUND PLANE																		
Start Time		AM		PM		End Time		AM		PM																						
Antenna Height																																
Session Beginning		1 <sup>st</sup>		M		2 <sup>nd</sup>		M		3 <sup>rd</sup>		M		Ave		4.718 Feet M																
Session End		1 <sup>st</sup>		M		2 <sup>nd</sup>		M		3 <sup>rd</sup>		M		Ave		M																
Rover Receiver																																
Type		TRIMBLE		Model		5800		Serial Number						4253117118																		
Approximate Distance From Base Station		Miles		Antenna Type		5800 INTERNAL		Antenna Height						6.6 FT																		
Station Observation																																
Observation Type		<u>RTK</u>		FAST STATIC		STATIC		OTHER																								
First Observation																																
Station Name (M1)		2		0		0		7		0		0		C		C		Description		NE closing corner Sec. 6												
Occupation time		PDOP Best		RMS Best																												
Number of Measurements		60		PDOP Worst		2.7		RMS Worst		11.4																						
Second Observation																																
Station Name (M2)		Description																														
Occupation time		PDOP Best		RMS Best																												
Number of Measurements		PDOP Worst		RMS Worst																												
Inverse Distance Between M1 and M2		FT		Alternate Base Station Used		Yes		No																								
Monument and Markings																																
Type / Size																																
Stone		Pipe/Cap		Post		Other																										
Size		Size		2½ / 3¼		1910 GLO		Size		Size																						
Material		Material		steel / brass		Material		Material																								

Sketch/Rubbing or Attach Photo of GPS Station Occupied  
Show rotation of stampings/markings relative to North and describe briefly

See Emery County Land Survey Monument Record Sheet 1810200700 C.C.

# EMERY COUNTY LAND SURVEY MONUMENT RECORD

Date of field work: 11-09-05

County Reference No. 1810200700 C.C.

Type of Monument:  Section Corner  
 Bench Mark

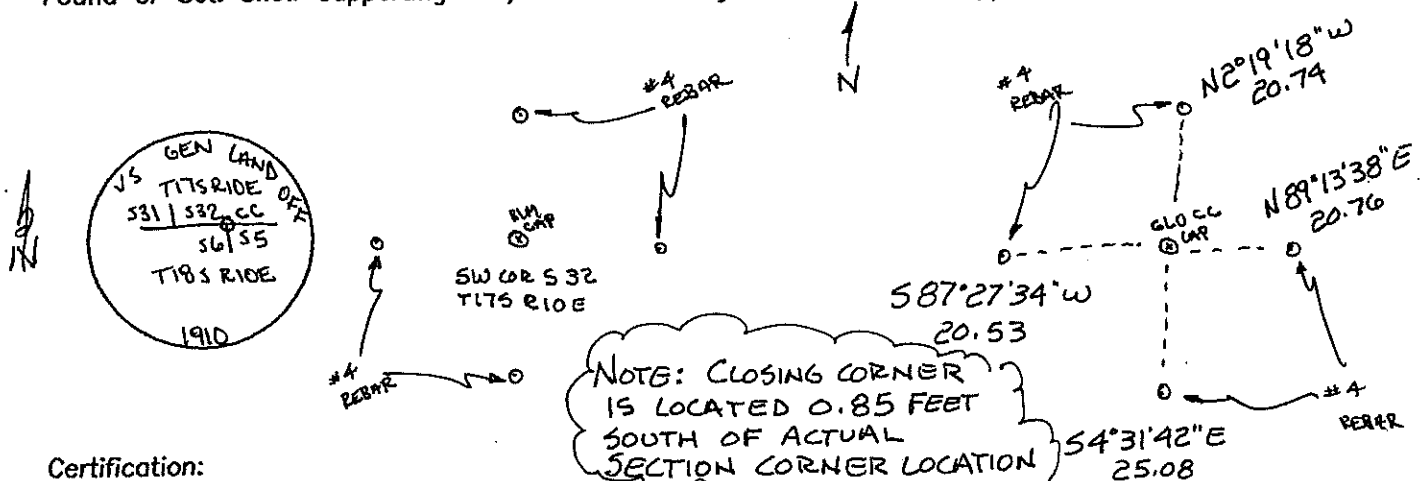
Quarter Corner  
 Other CLOSING CORNER

Your Description and Observation of Monument Found ( Be Specific ):  
 1910 US GENERAL LAND OFFICE CAP 24" ABOVE GROUND LEVEL WITH A  
 STEEL FENCE POST DRIVEN ALONGSIDE.

A BLM CAP WITH 4 #4 REBAR SETS WEST AS SHOWN BELOW

Description of Monument, Reference Monument or Accessories Established by You to Perpetuate the  
 Location of this Point: SET 4 #4 REBAR AS SHOWN BELOW.

Sketch showing Relative Location of Monument Accessories and Two Reference Points Stating Whether  
 Found or Set. Show Supporting and/or Contradictory Evidence where Applicable. Include North Arrow.



Certification:

Firm name and/or Surveyor: Johansen & Tuttle Eng.

Address: 90 S. 100 E. Castle Dale, Utah 84513 Phone: (435) 381-2523

This is to certify that I was in responsible charge of the surveying work described in this record and that to the best of my knowledge the information presented herein is true and correct.

Location Diagram:

Section: 6  
 Township: 18S  
 Range: 10E

