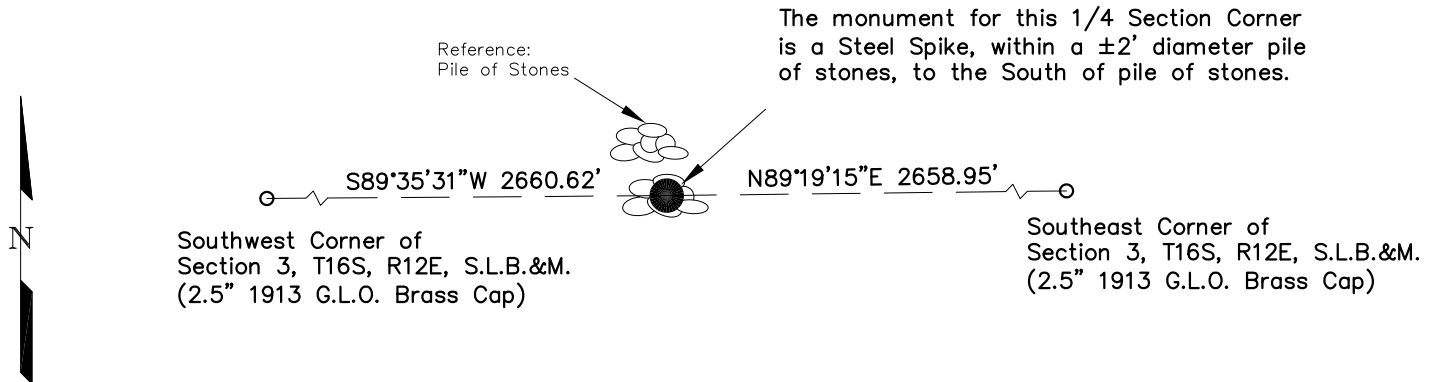


EMERY COUNTY, UTAH - SURVEY MONUMENT RECORD

SKETCH SHOWING RELATIVE LOCATION OF MONUMENT, ACCESSORIES AND REFERENCE POINTS STATING WHETHER FOUND OR SET.



Date: 11-12-13
Not to Scale



Corner Monument Markings - Photo View or Stamping on Cap

| | |
|---------------------------------|---|
| BLM POINT ID (GCDB): | UT260160S0120E0_440600 |
| UNITS = | US SURVEY FOOT |
| COORDINATES DETERMINED FROM: | TRI-STATE OPUS CORRECTED NETWORK CONTROL SYSTEM |
| GEOID 03, NAVD 88 ELEVATION = | 5394.47' |
| STATE PLANE COORDINATES | "UTAH COORDINATE SYSTEM 1983 CENTRAL ZONE" |
| NORTHING = | 6971714.945 |
| EASTING = | 1906395.457 |
| GEOGRAPHIC COORDINATES - NAD 83 | LATITUDE = N 39°27'18.97" |
| | LONGITUDE = W 110°33'28.72" |
| | ELLIPSOID HEIGHT = 5335.68' |

ADDITIONAL INFORMATION



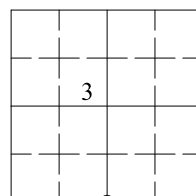
PHOTO OF CORNER

CERTIFICATION
This is to certify that this record was prepared from field notes of actual surveys made by me or under my direct supervision and that the same is true and correct to the best of my knowledge and belief.

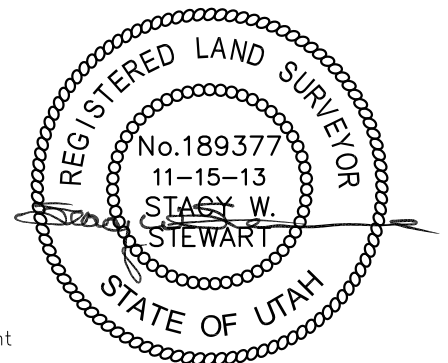
Surveyor's Name (Please Print): Stacy Stewart
Firm Name: Tri-State Land Surveying
Firm Address: 180 N. Vernal Ave, Vernal, UT
Utah License Number: 189377 Survey Date: 08-26-13

LOCATION DIAGRAM

1" = 1 Mile



● = Location of Monument



SEC 3 T 16S R 12E, S.L. B&M.

SURVEYED BY: C.D.S.

DRAFTED BY: V.H.