

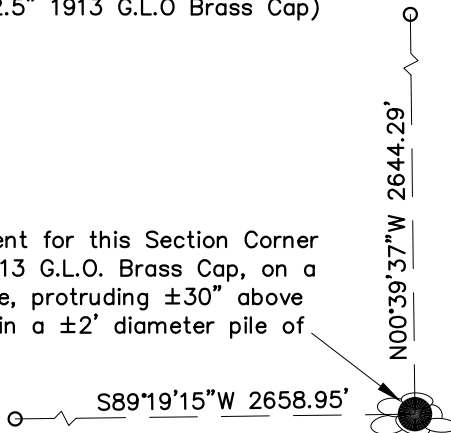
# EMERY COUNTY, UTAH - SURVEY MONUMENT RECORD

SKETCH SHOWING RELATIVE LOCATION OF MONUMENT, ACCESSORIES AND REFERENCE POINTS STATING WHETHER FOUND OR SET.

East 1/4 Corner of  
Section 3, T16S, R12E, S.L.B.&M.  
(2.5" 1913 G.L.O Brass Cap)



The monument for this Section Corner is a 2.5" 1913 G.L.O. Brass Cap, on a 2" Steel Pipe, protruding ±30" above ground, within a ±2' diameter pile of stones.



Date: 11-12-13  
Not to Scale

South 1/4 Corner of  
Section 3, T16S, R12E, S.L.B.&M.  
(Steel Spike)



Corner Monument Markings - Photo View or Stamping on Cap

BLM POINT ID (GCDB): UT260160S0120E0\_500600

UNITS = US SURVEY FOOT

COORDINATES DETERMINED FROM:  
TRI-STATE OPUS CORRECTED NETWORK CONTROL SYSTEM

GEOID 03, NAVD 88 ELEVATION = 5346.26'

STATE PLANE COORDINATES

"UTAH COORDINATE SYSTEM 1983 CENTRAL ZONE"

NORTHING = 6971746.451

EASTING = 1909053.305

GEOGRAPHIC COORDINATES - NAD 83

LATITUDE = N 39°27'19.00"

LONGITUDE = W 110°32'54.83"

ELLIPSOID HEIGHT = 5287.43'

## ADDITIONAL INFORMATION



PHOTO OF CORNER

## CERTIFICATION

This is to certify that this record was prepared from field notes of actual surveys made by me or under my direct supervision and that the same is true and correct to the best of my knowledge and belief.

Surveyor's Name (Please Print): Stacy Stewart

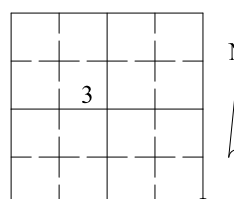
Firm Name: Tri-State Land Surveying

Firm Address: 180 N. Vernal Ave, Vernal, UT

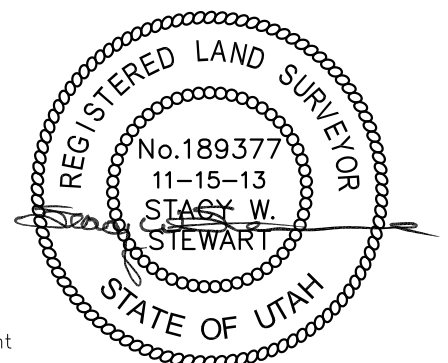
Utah License Number: 189377 Survey Date: 08-26-13

## LOCATION DIAGRAM

1" = 1 Mile



● = Location of Monument



SEC 3 T 16S R 12E, S.L. B&M.

SURVEYED BY: C.D.S.

DRAFTED BY: V.H.