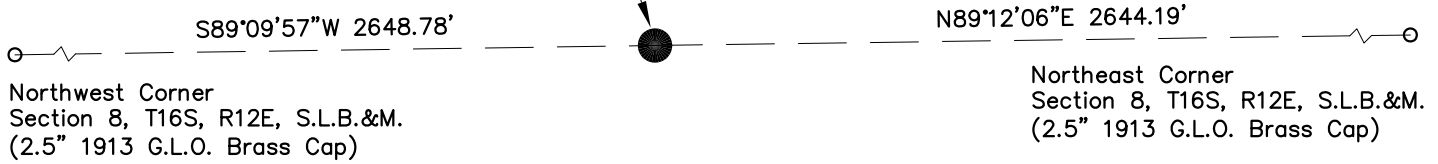


EMERY COUNTY, UTAH - SURVEY MONUMENT RECORD

SKETCH SHOWING RELATIVE LOCATION OF MONUMENT, ACCESSORIES AND REFERENCE POINTS STATING WHETHER FOUND OR SET.

The monument for this 1/4 Section Corner is the base of a broken monument post, found Brass Cap laying next to the base. Used undisturbed base to establish monument location.



Northwest Corner
Section 8, T16S, R12E, S.L.B.&M.
(2.5" 1913 G.L.O. Brass Cap)

Northeast Corner
Section 8, T16S, R12E, S.L.B.&M.
(2.5" 1913 G.L.O. Brass Cap)



Date: 11-14-13
Not to Scale



Corner Monument Markings - Photo View or Stamping on Cap

BLM POINT ID (GCDB): UT260160S0120E0_240600
UNITS = US SURVEY FOOT
COORDINATES DETERMINED FROM: TRI-STATE OPUS CORRECTED NETWORK CONTROL SYSTEM
GEOID 03, NAVD 88 ELEVATION = 5429.21'
STATE PLANE COORDINATES
"UTAH COORDINATE SYSTEM 1983 CENTRAL ZONE"
NORTHING = 6971594.615
EASTING = 1895815.536
GEOGRAPHIC COORDINATES - NAD 83
LATITUDE = N 39°27'18.86"
LONGITUDE = W 110°35'43.62"
ELLIPSOID HEIGHT = 5370.64'

ADDITIONAL INFORMATION



PHOTO OF CORNER

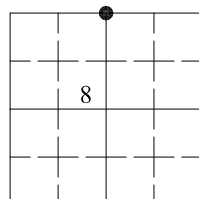
CERTIFICATION

This is to certify that this record was prepared from field notes of actual surveys made by me or under my direct supervision and that the same is true and correct to the best of my knowledge and belief.

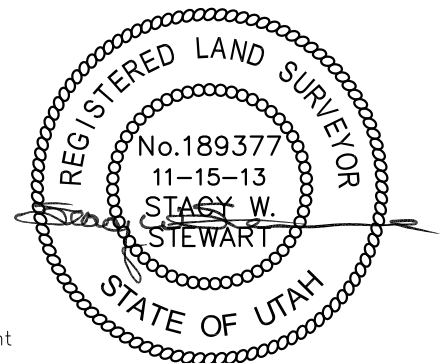
Surveyor's Name (Please Print): Stacy Stewart
 Firm Name: Tri-State Land Surveying
 Firm Address: 180 N. Vernal Ave, Vernal, UT
 Utah License Number: 189377 Survey Date: 09-09-13

LOCATION DIAGRAM

1" = 1 Mile



● = Location of Monument



SEC 8 T 16S R 12E, S.L. B&M.

SURVEYED BY: S.V.

DRAFTED BY: L.K.