

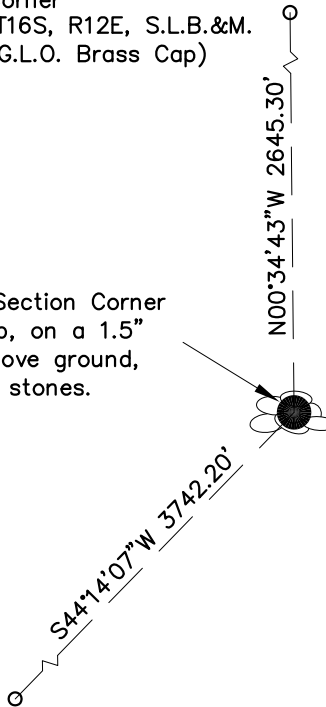
EMERY COUNTY, UTAH - SURVEY MONUMENT RECORD

SKETCH SHOWING RELATIVE LOCATION OF MONUMENT, ACCESSORIES AND REFERENCE POINTS STATING WHETHER FOUND OR SET.

Northeast Corner
Section 8, T16S, R12E, S.L.B.&M.
(2.5" 1913 G.L.O. Brass Cap)



The monument for this 1/4 Section Corner is a 2" 1913 G.L.O. Brass Cap, on a 1.5" iron pipe, protruding ±1.5' above ground, within a ±2' diameter pile of stones.



South 1/4 Corner of
Section 8, T16S, R12E, S.L.B.&M.
(2" 1913 G.L.O. Brass Cap)

Date: 12-03-13
Not to Scale



Corner Monument Markings - Photo View or Stamping on Cap

BLM POINT ID (GCDB):	UT260160S0120E0_300540
UNITS =	US SURVEY FOOT
COORDINATES DETERMINED FROM:	TRI-STATE OPUS CORRECTED NETWORK CONTROL SYSTEM
GEOID 03, NAVD 88 ELEVATION =	5481.16'
STATE PLANE COORDINATES	"UTAH COORDINATE SYSTEM 1983 CENTRAL ZONE"
NORTHING =	6968987.197
EASTING =	1898485.260
GEOGRAPHIC COORDINATES - NAD 83	LATITUDE = N 39°26'52.82"
	LONGITUDE = W 110°35'09.93"
ELLIPSOID HEIGHT =	5422.46'

ADDITIONAL INFORMATION



PHOTO OF CORNER

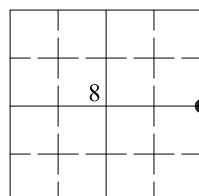
CERTIFICATION

This is to certify that this record was prepared from field notes of actual surveys made by me or under my direct supervision and that the same is true and correct to the best of my knowledge and belief.

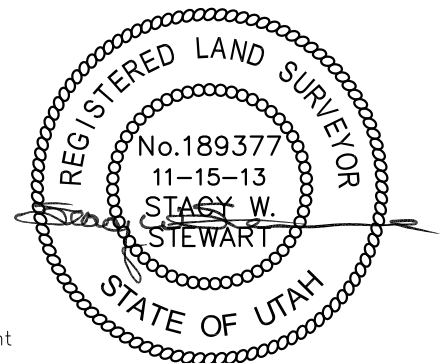
Surveyor's Name (Please Print): Stacy Stewart
 Firm Name: Tri-State Land Surveying
 Firm Address: 180 N. Vernal Ave, Vernal, UT
 Utah License Number: 189377 Survey Date: 09-09-13

LOCATION DIAGRAM

1" = 1 Mile



● = Location of Monument



SEC 8 T 16S R 12E, S.L. B&M.

SURVEYED BY: S.V.

DRAFTED BY: V.H.