

# UTAH LAND SURVEY MONUMENT RECORD

• TYPE OF MONUMENT:  SECTION CORNER  QUARTER CORNER  SIXTEENTH CORNER  OTHER \_\_\_\_\_

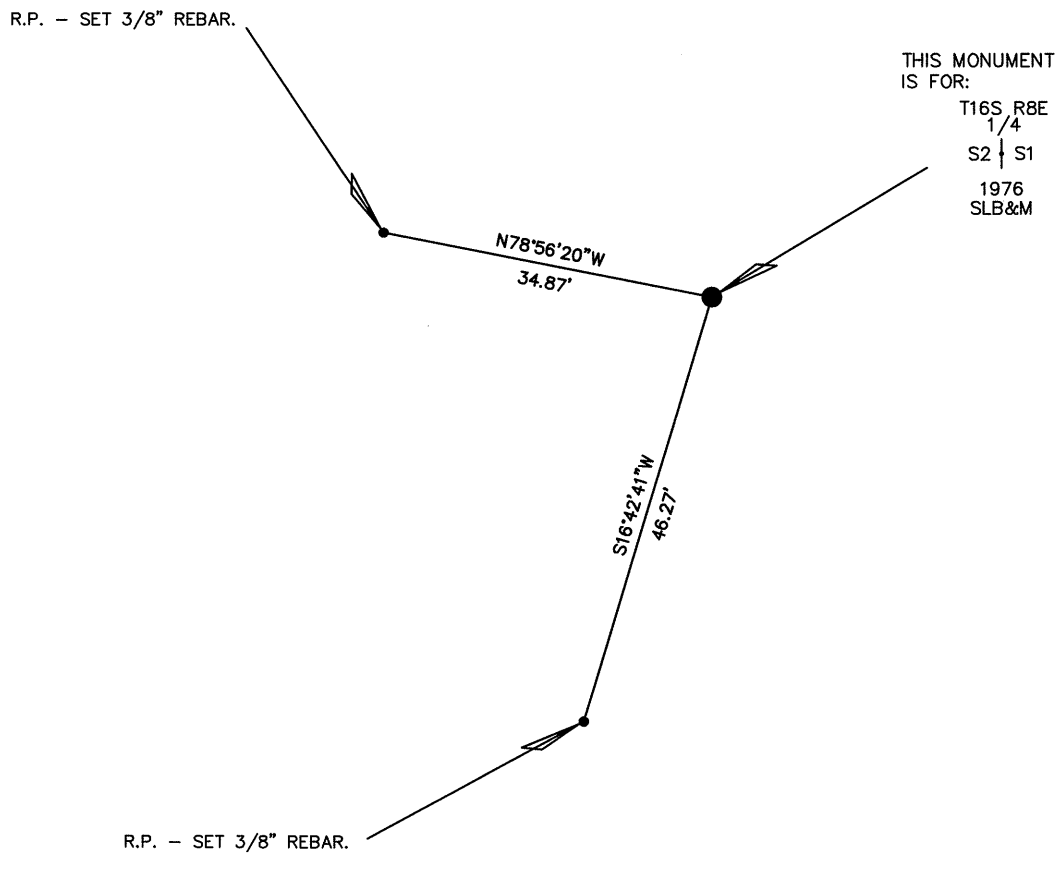
• DESCRIPTION AND DATE OF MONUMENT FOUND:

ON THE DATE OF 08/15/2016 THE MONUMENT WAS FOUND FOR THIS QUARTER CORNER OF MAXIMUM CONTROL WHICH IS A CADASTRAL 3 1/4" BRASS CAP ON A 2" PIPE PROTRUDING 1.0' ABOVE THE GROUND WITH A CEDAR POST 0.4' EAST OF CAP.

• DESCRIPTION OF MONUMENT SET BY YOU TO PERPETUATE THE LOCATION OF THIS POINT:

SET REFERENCE POINTS FOR THE MONUMENT AS SHOWN.

• SKETCH SHOWING RELATIVE LOCATION OF MONUMENT, ACCESSORIES AND REFERENCE POINTS STATING WHETHER FOUND OR SET, SHOW SUPPORTING AND/OR CONTRADICTORY EVIDENCE WHERE APPLICABLE:



THIS MONUMENT IS FOR:

T16S, R8E  
1/4  
S2 | S1  
1976  
SLB&M



SCALE 1"=20'  
(EXCEPT IN TRIVIAL CASES)  
BEARINGS ARE RELATED TO WGS 84 WITH GPS OBSERVATIONS  
DRAWN BY: J.L.  
11/10/2016  
P.C. B. HUNTING

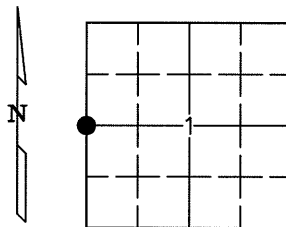
NOTE:  
WGS 84 COORDINATE  
LAT. 39°27'38.43"  
LONG. 110°59'02.26"

**CERTIFICATION**

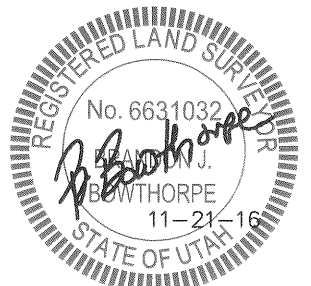
This is to certify that I was in responsible charge of the surveying work described in this record and that to the best of my knowledge the information presented herein is true and correct.

Surveyor's Name (Please Print): BRANDON J. BOWTHORPE  
Firm Name: UELS, LLC  
Firm Address: 85 SOUTH 200 EAST, VERNAL, UTAH 84078  
Phone: 435-789-1017 Utah License Number: 6631032

1" = 1 Mile



● = Location of Monument

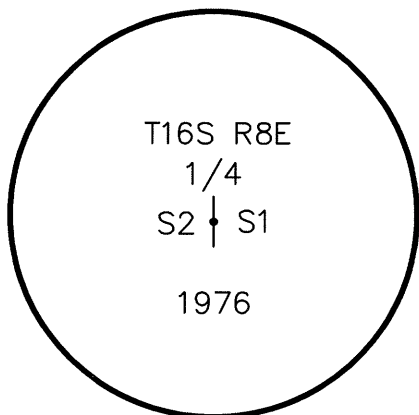


Corner CORNER COMMON TO 2 SECTIONS  
Name: WEST 1/4 CORNER OF SECTION 1

Signature/Date through Seal

SEC 1 T 16S R 8E, S.L. B&M.  
COUNTY EMERY INDEX REF NUMBER 21-X

Not to scale



Stamping on Cap

- a. Date of field Work to Establish, Restore or Rehabilitate Monument: 08/15/2016
- b. Date Monument was used as a Control corner: 08/15/2016