

# UTAH LAND SURVEY MONUMENT RECORD

• TYPE OF MONUMENT:  SECTION CORNER  QUARTER CORNER  SIXTEENTH CORNER  OTHER CLOSING CORNER

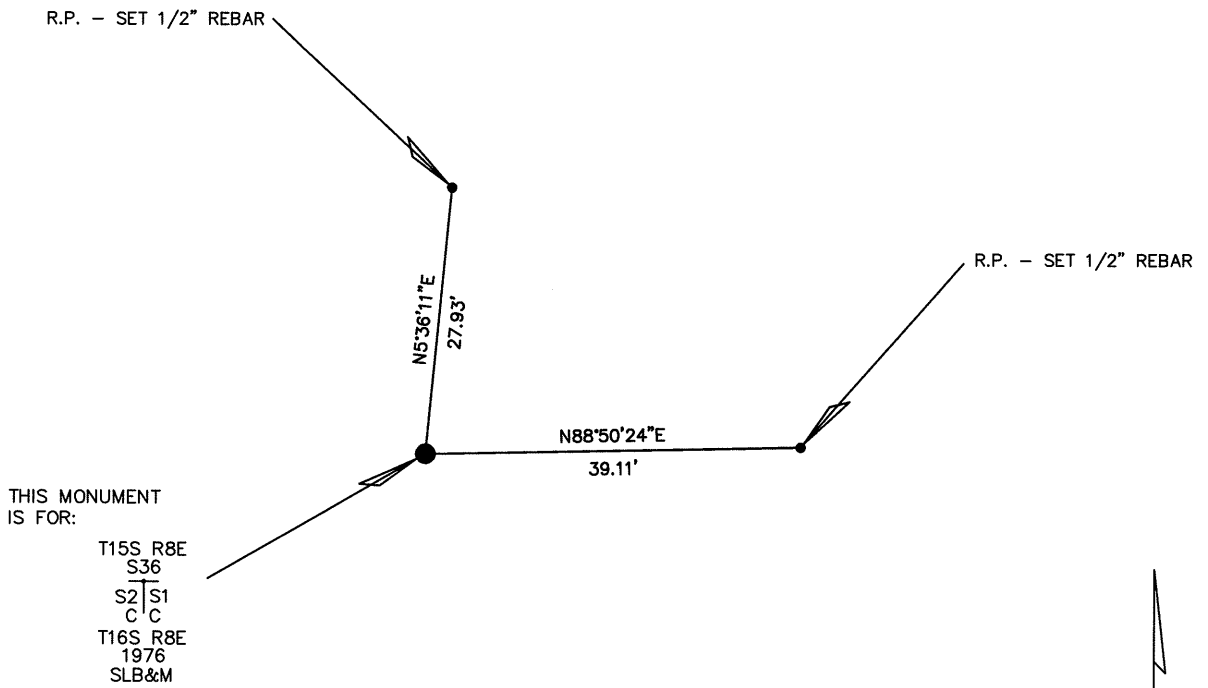
• DESCRIPTION AND DATE OF MONUMENT FOUND:

ON THE DATE OF 08/15/2016 THE MONUMENT WAS FOUND FOR THIS CLOSING CORNER WHICH IS A CADASTRAL 3 1/4" BRASS CAP ON A 2" PIPE PROTRUDING 1.5' ABOVE THE GROUND PILE OF STONES 3'X3'X1' AND A STEEL POST 0.1' SOUTH WITH A E/W FENCE LINE 0.5' NORTH OF CAP.

• DESCRIPTION OF MONUMENT SET BY YOU TO PERPETUATE THE LOCATION OF THIS POINT:

SET REFERENCE POINTS FOR THE MONUMENT AS SHOWN.

• SKETCH SHOWING RELATIVE LOCATION OF MONUMENT, ACCESSORIES AND REFERENCE POINTS STATING WHETHER FOUND OR SET, SHOW SUPPORTING AND/OR CONTRADICTORY EVIDENCE WHERE APPLICABLE:



THIS MONUMENT IS FOR:  
 T15S R8E  
 S36  
 S2 | S1  
 C C  
 T16S R8E  
 1976  
 SLB&M



SCALE 1"=20'  
 (EXCEPT IN TRIVIAL CASES)  
 BEARINGS ARE RELATED TO WGS 84 WITH GPS OBSERVATIONS  
 DRAWN BY: J.L.  
 11/09/2016  
 P.C. B. HUNTING

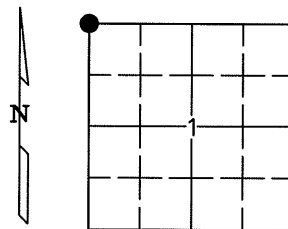
NOTE:  
 WGS 84 COORDINATE  
 LAT. 39°28'10.91"  
 LONG. 110°59'02.13"

**CERTIFICATION**

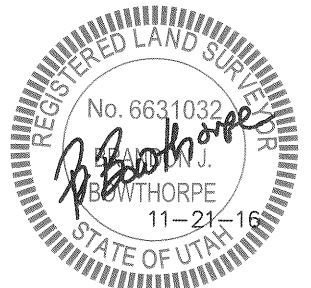
This is to certify that I was in responsible charge of the surveying work described in this record and that to the best of my knowledge the information presented herein is true and correct.

Surveyor's Name (Please Print): BRANDON J. BOWTHORPE  
 Firm Name: UELS, LLC  
 Firm Address: 85 SOUTH 200 EAST, VERNAL, UTAH 84078  
 Phone: 435-789-1017 Utah License Number: 6631032

1" = 1 Mile



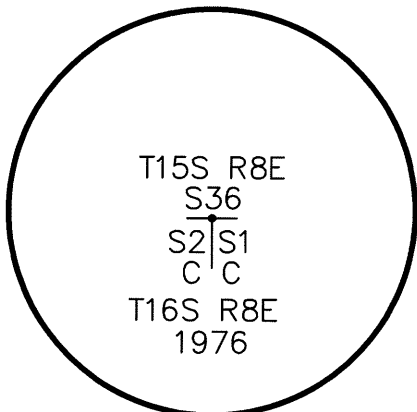
● = Location of Monument



Corner CORNER COMMON TO 2 SECTIONS  
 Name: NORTHWEST CLOSING CORNER OF SEC. 1 Signature/Date through Seal

SEC 1 T 16S R 8E, S.L. B&M.  
 COUNTY EMERY INDEX REF NUMBER 21-Z

Not to scale



Stamping on Cap

- a. Date of field Work to Establish, Restore or Rehabilitate Monument: 08/15/2016
- b. Date Monument was used as a Control corner: 08/15/2016