

UTAH LAND SURVEY MONUMENT RECORD

• TYPE OF MONUMENT: SECTION CORNER QUARTER CORNER SIXTEENTH CORNER OTHER _____

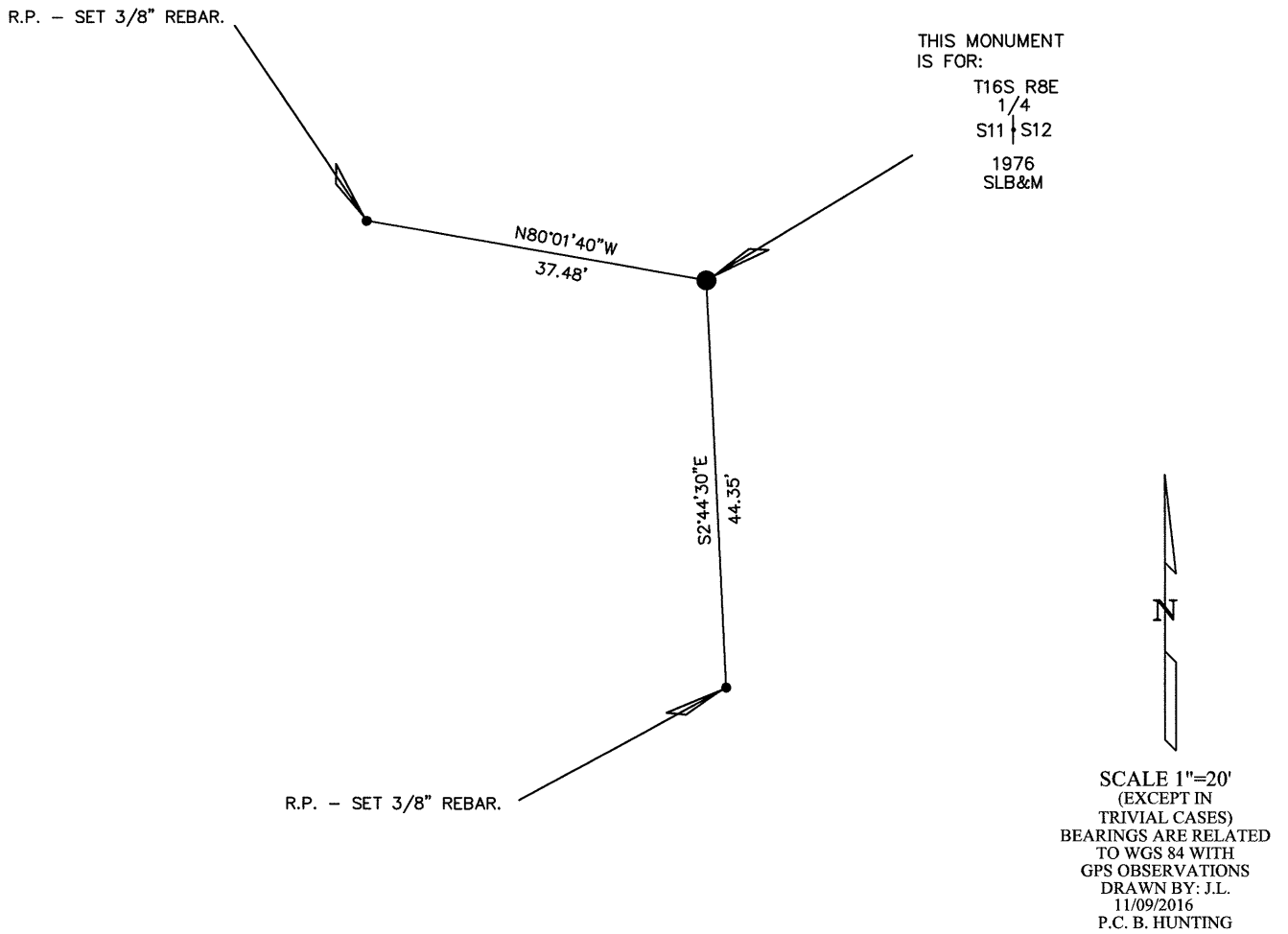
• DESCRIPTION AND DATE OF MONUMENT FOUND:

ON THE DATE OF 08/15/2016 THE MONUMENT WAS FOUND FOR THIS QUARTER CORNER OF MAXIMUM CONTROL WHICH IS A CADASTRAL 3 1/4" BRASS CAP ON A 2" PIPE PROTRUDING 0.1' ABOVE THE GROUND IN A PILE OF STONES 3'X3'X1' WITH A CEDAR POST 0.5' SOUTH OF CAP.

• DESCRIPTION OF MONUMENT SET BY YOU TO PERPETUATE THE LOCATION OF THIS POINT:

SET REFERENCE POINTS FOR THE MONUMENT AS SHOWN.

• SKETCH SHOWING RELATIVE LOCATION OF MONUMENT, ACCESSORIES AND REFERENCE POINTS STATING WHETHER FOUND OR SET, SHOW SUPPORTING AND/OR CONTRADICTIONARY EVIDENCE WHERE APPLICABLE:



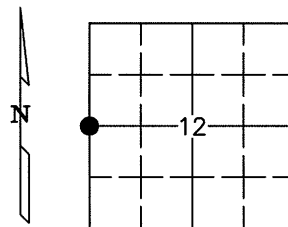
NOTE:
WGS 84 COORDINATE
LAT. 39°26'46.43"
LONG. 110°59'02.41"

CERTIFICATION

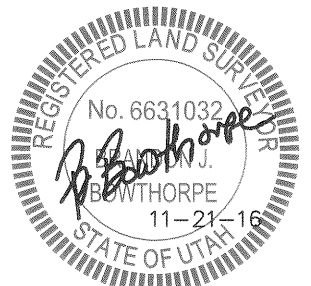
This is to certify that I was in responsible charge of the surveying work described in this record and that to the best of my knowledge the information presented herein is true and correct.

Surveyor's Name (Please Print): BRANDON J. BOWTHORPE
 Firm Name: UELS, LLC
 Firm Address: 85 SOUTH 200 EAST, VERNAL, UTAH 84078
 Phone: 435-789-1017 Utah License Number: 6631032

1" = 1 Mile



● = Location of Monument

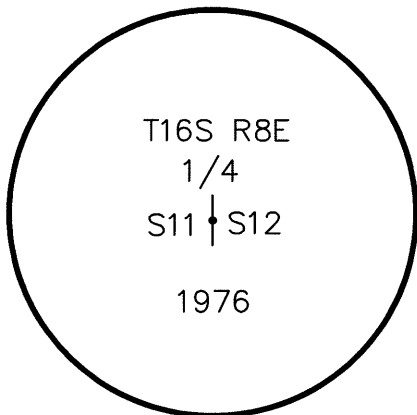


Corner CORNER COMMON TO 2 SECTIONS
 Name: WEST 1/4 CORNER OF SECTION 12

Signature/Date through Seal

SEC 12 T 16S R 8E, S.L. B&M.
 COUNTY EMERY INDEX REF NUMBER 21-T

Not to scale



Stamping on Cap

- a. Date of field Work to Establish, Restore or Rehabilitate Monument: 08/15/2016
- b. Date Monument was used as a Control corner: 08/15/2016