

UTAH LAND SURVEY MONUMENT RECORD

• TYPE OF MONUMENT: SECTION CORNER QUARTER CORNER SIXTEENTH CORNER OTHER _____

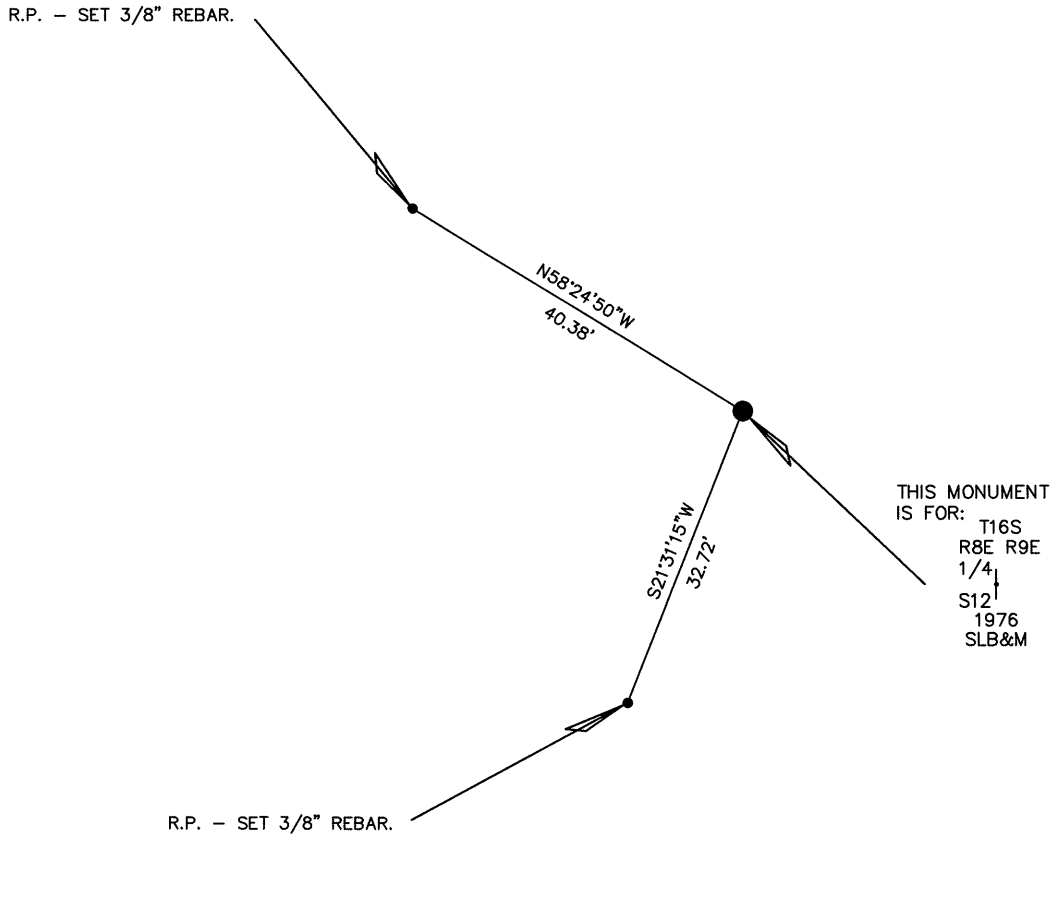
• DESCRIPTION AND DATE OF MONUMENT FOUND:

ON THE DATE OF 08/15/2016 THE MONUMENT WAS FOUND FOR THIS QUARTER CORNER OF MINIMUM CONTROL WHICH IS A CADASTRAL 3 1/4" BRASS CAP ON A 2" PIPE PROTRUDING 0.4' ABOVE THE GROUND WITH A STEEL POST 0.1' EAST OF CAP.

• DESCRIPTION OF MONUMENT SET BY YOU TO PERPETUATE THE LOCATION OF THIS POINT:

SET REFERENCE POINTS FOR THE MONUMENT AS SHOWN.

• SKETCH SHOWING RELATIVE LOCATION OF MONUMENT, ACCESSORIES AND REFERENCE POINTS STATING WHETHER FOUND OR SET, SHOW SUPPORTING AND/OR CONTRADICTIONARY EVIDENCE WHERE APPLICABLE:



N

SCALE 1"=20'
(EXCEPT IN TRIVIAL CASES)
BEARINGS ARE RELATED TO WGS 84 WITH GPS OBSERVATIONS
DRAWN BY: J.L.
11/09/2016
P.C. B. HUNTING

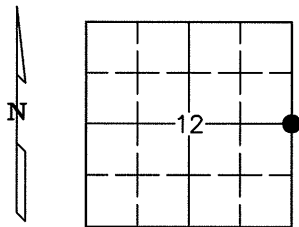
NOTE:
WGS 84 COORDINATE
LAT. 39°26'45.89"
LONG. 110°57'56.03"

CERTIFICATION

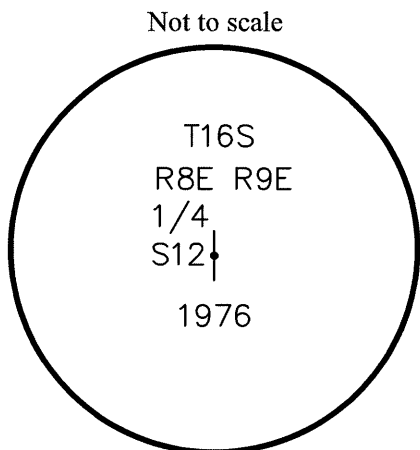
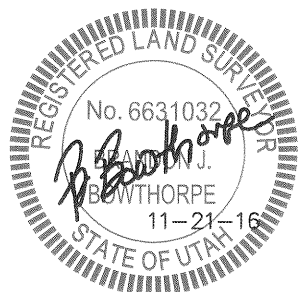
This is to certify that I was in responsible charge of the surveying work described in this record and that to the best of my knowledge the information presented herein is true and correct.

Surveyor's Name (Please Print): BRANDON J. BOWTHORPE
 Firm Name: UELS, LLC
 Firm Address: 85 SOUTH 200 EAST, VERNAL, UTAH 84078
 Phone: 435-789-1017 Utah License Number: 6631032

1" = 1 Mile



● = Location of Monument



Stamping on Cap

Corner CORNER COMMON TO 1 SECTION
 Name: EAST 1/4 CORNER OF SECTION 12

Signature/Date through Seal

SEC 12 T 16S R 8E, S.L.B.&M.
 COUNTY EMERY INDEX REF NUMBER 25-T

a. Date of field Work to Establish, Restore or Rehabilitate Monument: 08/15/2016
 b. Date Monument was used as a Control corner: 08/15/2016