

UTAH LAND SURVEY MONUMENT RECORD

• TYPE OF MONUMENT: SECTION CORNER QUARTER CORNER SIXTEENTH CORNER OTHER _____

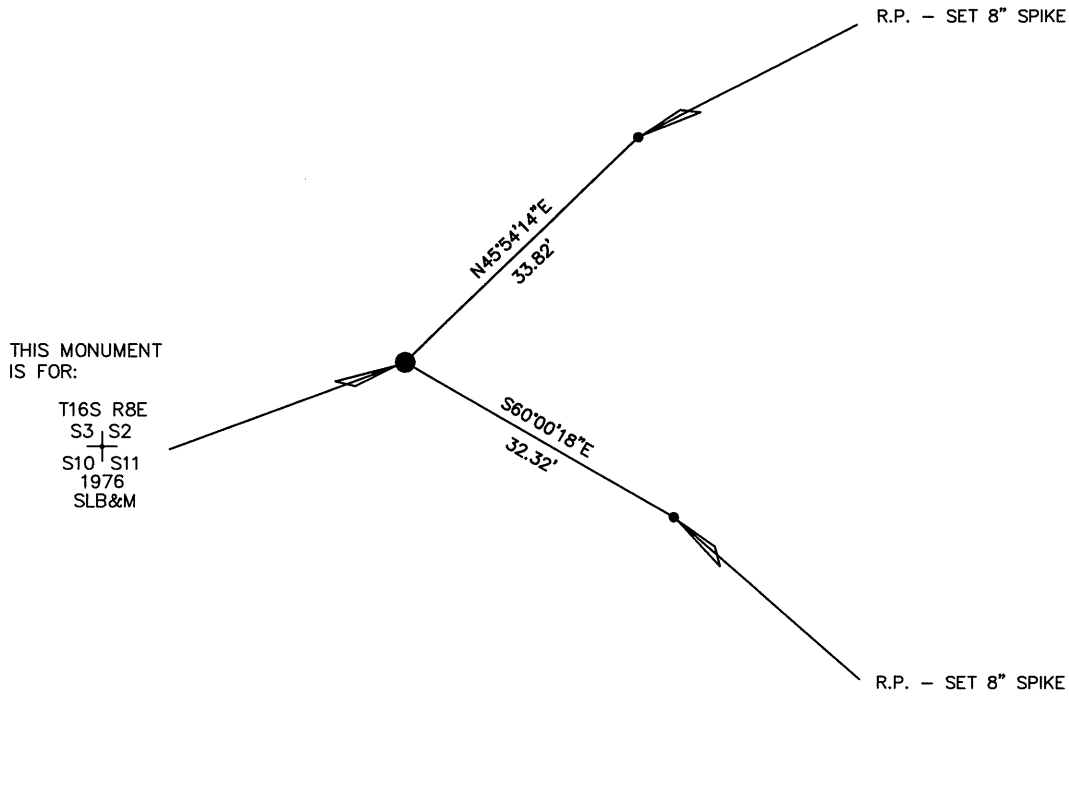
• DESCRIPTION AND DATE OF MONUMENT FOUND:

ON THE DATE OF 08/16/2016 THE MONUMENT WAS FOUND FOR THIS SECTION CORNER COMMON TO FOUR SECTIONS WHICH IS A CADASTRAL 3 1/4" BRASS CAP ON A 2" PIPE PROTRUDING 0.8' ABOVE THE GROUND WITH A PILE OF STONES 2'X2'X1' 3.0' WEST OF CAP.

• DESCRIPTION OF MONUMENT SET BY YOU TO PERPETUATE THE LOCATION OF THIS POINT:

SET REFERENCE POINTS FOR THE MONUMENT AS SHOWN.

• SKETCH SHOWING RELATIVE LOCATION OF MONUMENT, ACCESSORIES AND REFERENCE POINTS STATING WHETHER FOUND OR SET, SHOW SUPPORTING AND/OR CONTRADICTORY EVIDENCE WHERE APPLICABLE:



THIS MONUMENT IS FOR:

T16S R8E
S3 S2
S10 S11
1976
SLB&M

SCALE 1"=20'
(EXCEPT IN TRIVIAL CASES)
BEARINGS ARE RELATED TO WGS 84 WITH GPS OBSERVATIONS
DRAWN BY: J.L.
11/10/2016
P.C. B. HUNTING

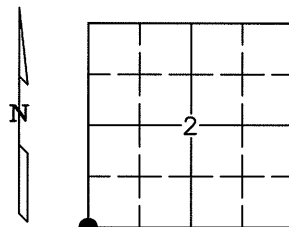
NOTE:
WGS 84 COORDINATE
LAT. 39°27'12.02"
LONG. 111°00'08.98"

CERTIFICATION

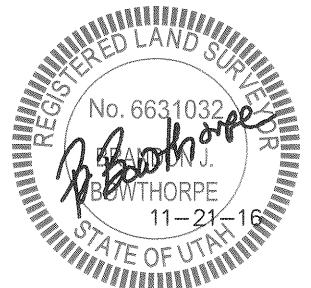
This is to certify that I was in responsible charge of the surveying work described in this record and that to the best of my knowledge the information presented herein is true and correct.

Surveyor's Name (Please Print): BRANDON J. BOWTHORPE
Firm Name: UELS, LLC
Firm Address: 85 SOUTH 200 EAST, VERNAL, UTAH 84078
Phone: 435-789-1017 Utah License Number: 6631032

1" = 1 Mile



● = Location of Monument

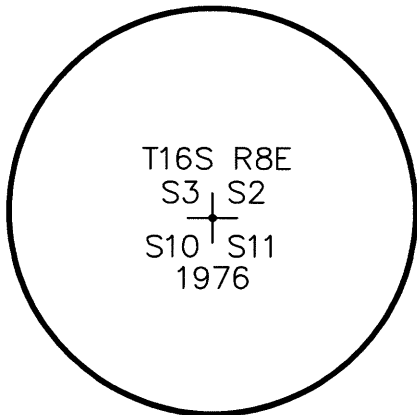


Corner CORNER COMMON TO 4 SECTIONS
Name: SOUTHWEST CORNER OF SEC. 2

Signature/Date through Seal

SEC 2 T 16S R 8E, S.L. B&M.
COUNTY EMERY INDEX REF NUMBER 17-V

Not to scale



Stamping on Cap

- a. Date of field Work to Establish, Restore or Rehabilitate Monument: 08/16/2016
- b. Date Monument was used as a Control corner: 08/16/2016