

UTAH LAND SURVEY MONUMENT RECORD

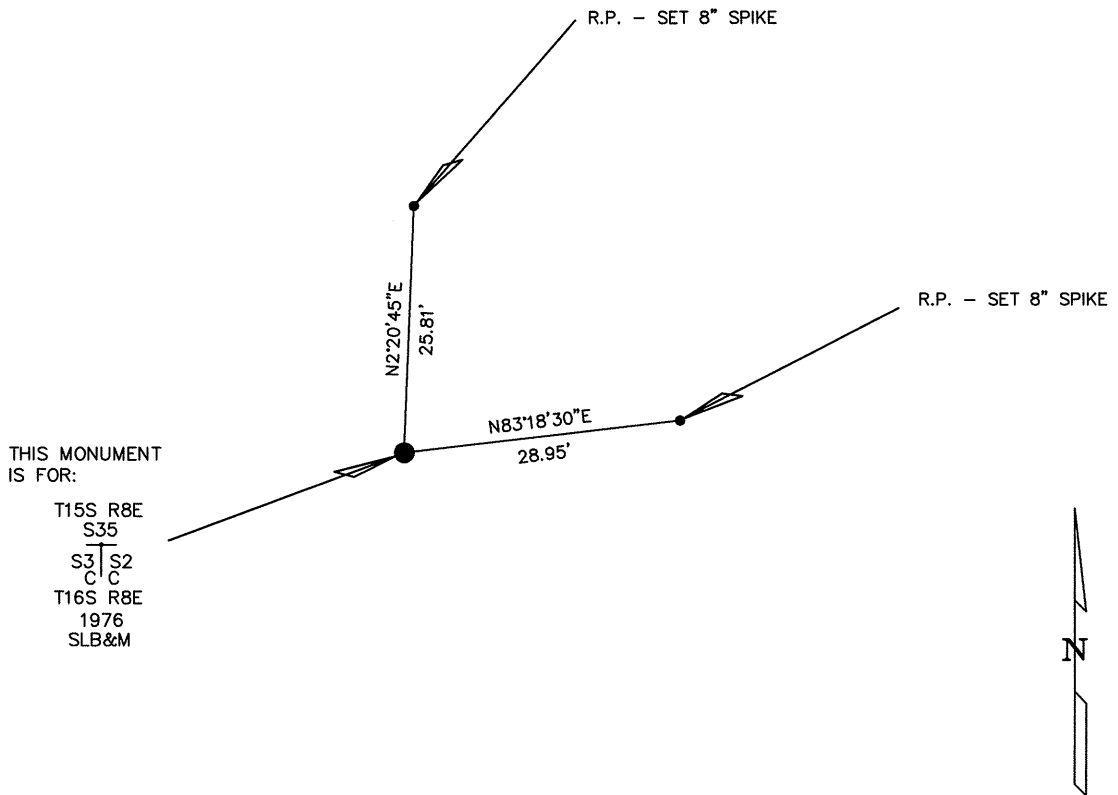
• TYPE OF MONUMENT: SECTION CORNER QUARTER CORNER SIXTEENTH CORNER OTHER CLOSING CORNER

• DESCRIPTION AND DATE OF MONUMENT FOUND:

ON THE DATE OF 08/16/2016 THE MONUMENT WAS FOUND FOR THIS CLOSING CORNER WHICH IS A CADASTRAL 3 1/4" BRASS CAP ON A 2" PIPE PROTRUDING 1.2' ABOVE THE GROUND PILE OF STONES 5'X5'X2'.

• DESCRIPTION OF MONUMENT SET BY YOU TO PERPETUATE THE LOCATION OF THIS POINT:
SET REFERENCE POINTS FOR THE MONUMENT AS SHOWN.

• SKETCH SHOWING RELATIVE LOCATION OF MONUMENT, ACCESSORIES AND REFERENCE POINTS STATING WHETHER FOUND OR SET, SHOW SUPPORTING AND/OR CONTRADICTIONARY EVIDENCE WHERE APPLICABLE:



THIS MONUMENT IS FOR:
T15S R8E
S35
S3 | S2
C C
T16S R8E
1976
SLB&M

SCALE 1"=20'
(EXCEPT IN TRIVIAL CASES)
BEARINGS ARE RELATED TO WGS 84 WITH GPS OBSERVATIONS
DRAWN BY: J.L.
11/09/2016
P.C. B. HUNTING

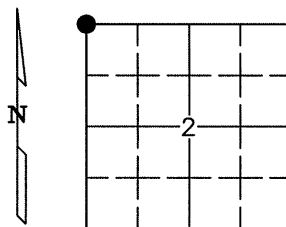
NOTE:
WGS 84 COORDINATE
LAT. 39°28'10.94"
LONG. 111°00'09.08"

CERTIFICATION

This is to certify that I was in responsible charge of the surveying work described in this record and that to the best of my knowledge the information presented herein is true and correct.

Surveyor's Name (Please Print): BRANDON J. BOWTHORPE
Firm Name: UELS, LLC
Firm Address: 85 SOUTH 200 EAST, VERNAL, UTAH 84078
Phone: 435-789-1017 Utah License Number: 6631032

1" = 1 Mile

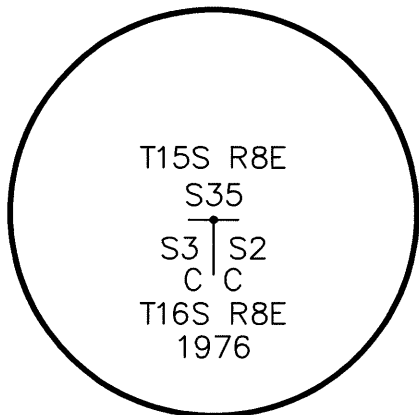


● = Location of Monument



Corner CORNER COMMON TO 2 SECTIONS
Name: NORTHWEST CLOSING CORNER OF SEC. 2 Signature/Date through Seal
SEC 2 T 16S R 8E, S.L. B&M.
COUNTY EMERY INDEX REF NUMBER 17-Z

Not to scale



Stamping on Cap

a. Date of field Work to Establish, Restore or Rehabilitate Monument: 08/16/2016
b. Date Monument was used as a Control corner: 08/16/2016