

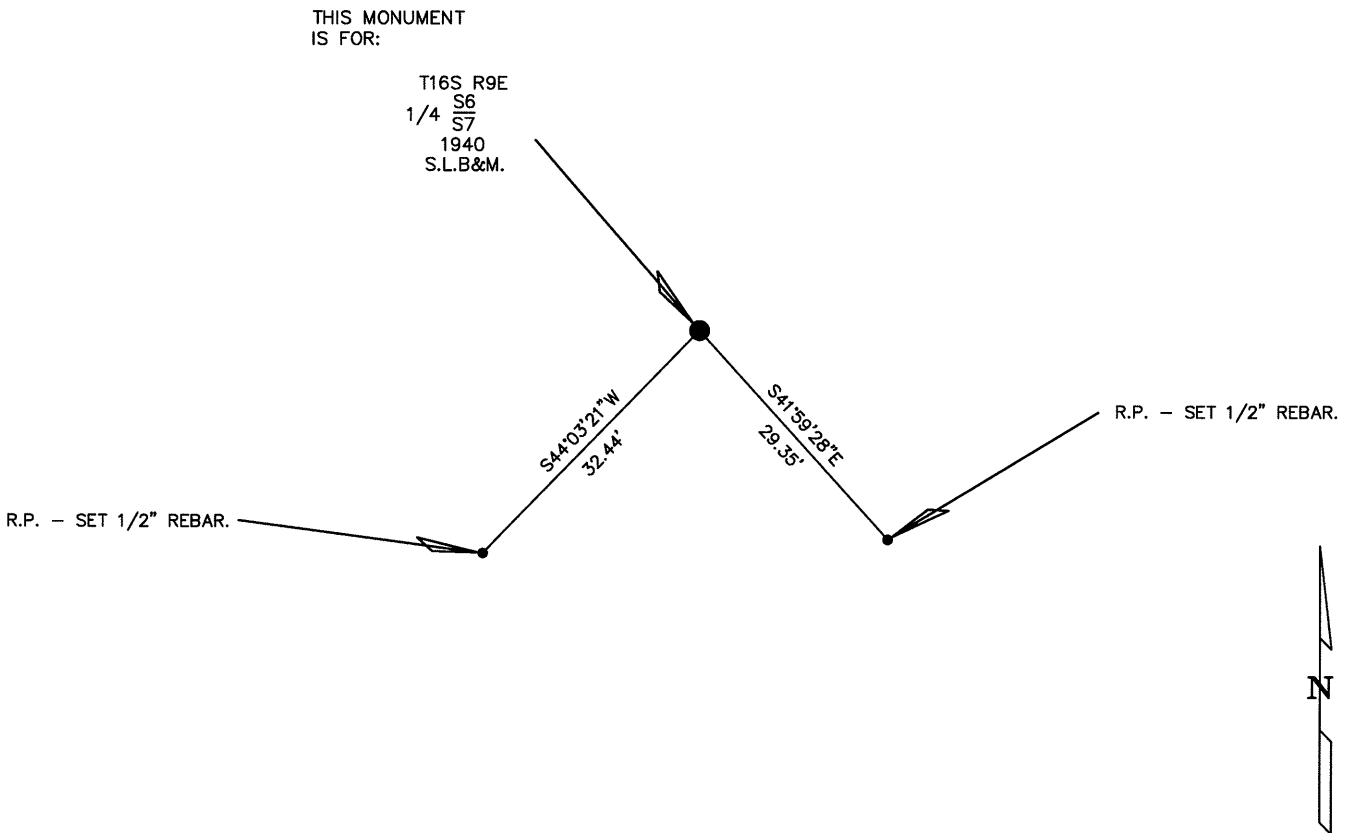
# UTAH LAND SURVEY MONUMENT RECORD

• TYPE OF MONUMENT:  SECTION CORNER  QUARTER CORNER  SIXTEENTH CORNER  OTHER \_\_\_\_\_

• DESCRIPTION AND DATE OF MONUMENT FOUND:  
 ON THE DATE OF 08/15/2016 THE MONUMENT WAS FOUND FOR THIS 1/4 CORNER OF MAXIMUM CONTROL WHICH IS A 2.5" BRASS CAP ON A 1.0" PIPE PROTRUDING 0.5' ABOVE THE GROUND WITH A PILE OF STONES 3'X3'X0.5'

• DESCRIPTION OF MONUMENT SET BY YOU TO PERPETUATE THE LOCATION OF THIS POINT:  
 SET REFERENCE POINTS FOR THE MONUMENT AS SHOWN.

• SKETCH SHOWING RELATIVE LOCATION OF MONUMENT, ACCESSORIES AND REFERENCE POINTS STATING WHETHER FOUND OR SET, SHOW SUPPORTING AND/OR CONTRADICTORY EVIDENCE WHERE APPLICABLE:

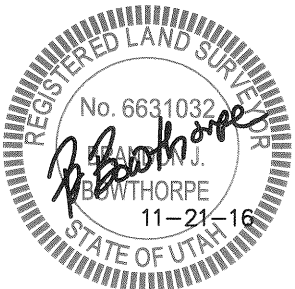
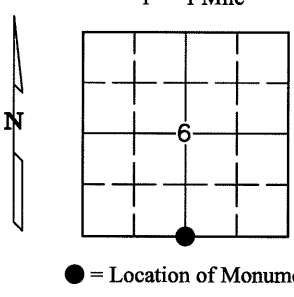


SCALE 1"=20'  
 (EXCEPT IN TRIVIAL CASES)  
 BEARINGS ARE RELATED TO WGS 84 WITH GPS OBSERVATIONS  
 DRAWN BY: J.L.  
 11/04/2016  
 P.C. B. HUNTING

NOTE:  
 WGS 84 COORDINATE  
 LAT. 39°27'18.08"  
 LONG. 110°57'22.50"

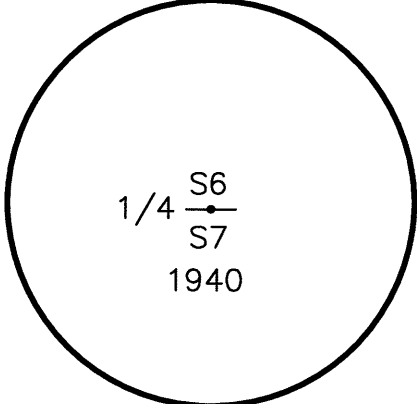
**CERTIFICATION**  
 This is to certify that I was in responsible charge of the surveying work described in this record and that to the best of my knowledge the information presented herein is true and correct.

Surveyor's Name (Please Print): BRANDON J. BOWTHORPE  
 Firm Name: UELS, LLC  
 Firm Address: 85 SOUTH 200 EAST, VERNAL, UTAH 84078  
 Phone: 435-789-1017 Utah License Number: 6631032



Corner CORNER COMMON TO 2 SECTIONS  
 Name: SOUTH 1/4 CORNER OF SECTION 6 Signature/Date through Seal  
 SEC 6 T 16S R 9E, S.L. B&M.  
 COUNTY EMERY INDEX REF NUMBER 3-V

Not to scale



Stamping on Cap

a. Date of field Work to Establish, Restore or Rehabilitate Monument: 08/15/2016  
 b. Date Monument was used as a Control corner: 08/15/2016