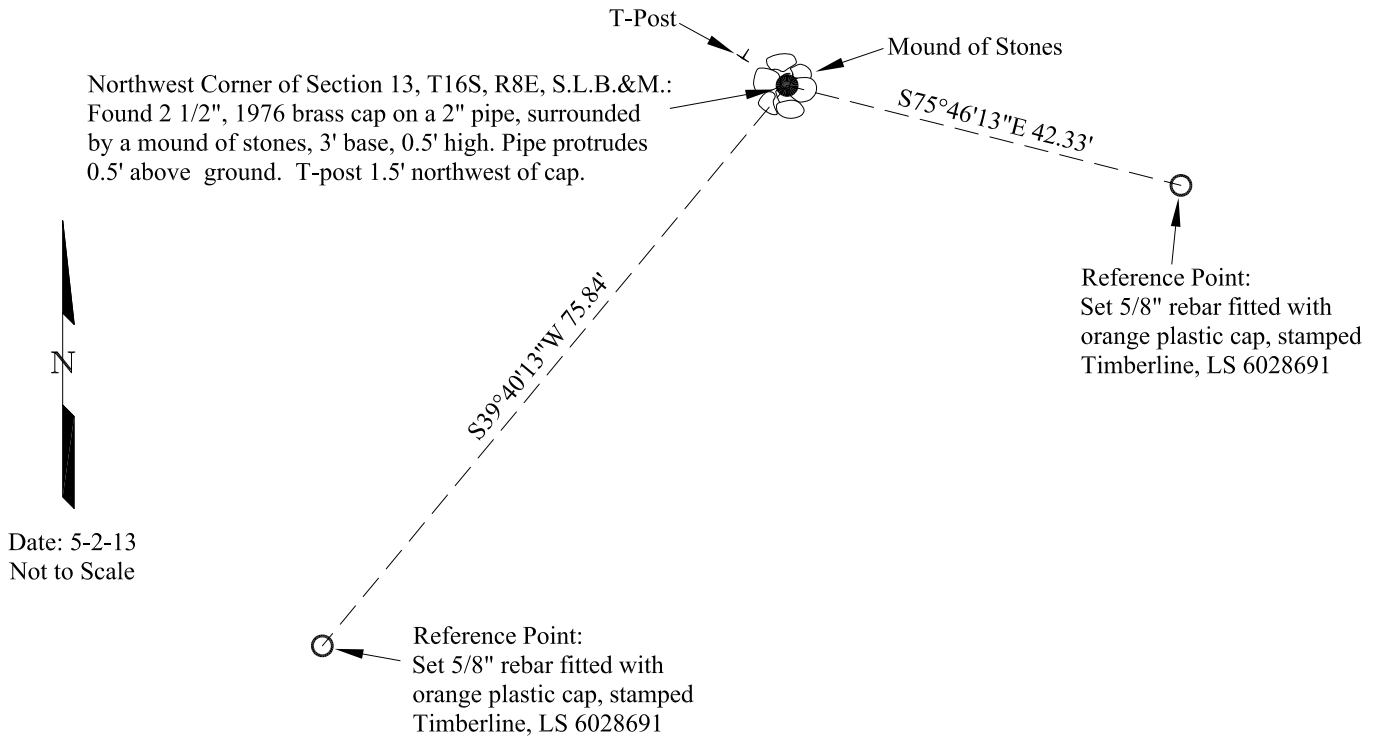


SURVEY MONUMENT RECORD - EMERY COUNTY UTAH

SKETCH SHOWING RELATIVE LOCATION OF MONUMENT, ACCESSORIES AND REFERENCE POINTS STATING WHETHER FOUND OR SET.
Also, indicate scale and basis of bearings.



Corner Monument Markings - Photo View or Stamping on Cap

BLM POINT ID (GCDB): UT260160S0080E0_600500
UNITS = US SURVEY FOOT
COORDINATES DETERMINED FROM: UTAH REFERENCE NETWORK CONTROL SYSTEM
GEOID12A (CONUS), NAVD 88 ELEVATION = 6799.0'
STATE PLANE COORDINATES
"UTAH COORDINATE SYSTEM 1983 CENTRAL ZONE"
NORTHING = 6,964,807.541
EASTING = 1,786,142.725
GEOGRAPHIC COORDINATES - NAD 83
LATITUDE = N 39° 26' 20.38706"
LONGITUDE = W 110° 59' 02.42591"
ELLIPSOID HEIGHT = 6744.33'

ADDITIONAL INFORMATION

- Point ties from the Northwest Corner of Section 13, T16S, R8E, S.L.B.&M. to neighboring Section Corners:
1. The North 1/4 Corner of Section 13, T16S, R8E, S.L.B.&M., being a 1976 Brass Cap, bears $S89^{\circ}25'45''E$ 2650.67' (Basis of Bearings).
 2. The West 1/4 Corner of Section 12, T16S, R8E, S.L.B.&M., being a 1976 Brass Cap, bears $N00^{\circ}10'10''E$ 2635.90'.



PHOTO OF CORNER

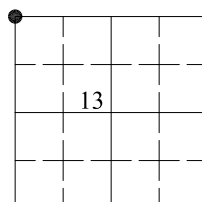
CERTIFICATION

This is to certify that I was in responsible charge of the surveying work described in this record and that to the best of my knowledge the information presented herein is true and correct.

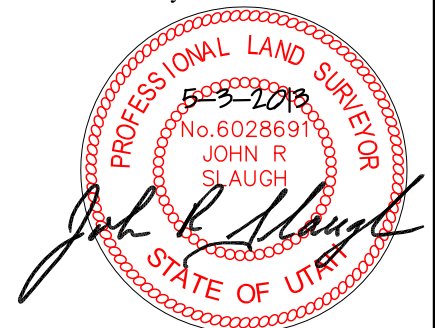
Surveyor's Name (Please Print): John R Slaugh
 Firm Name: Timberline Engineering and Land Surveying, Inc.
 Firm Address: 209 North 300 West Vernal, Utah 84078
 Utah License Number: 6028691 Survey Date: April 25, 2013

LOCATION DIAGRAM

1" = 1 Mile



● = Location of Monument



Signature/Date through Seal

SEC 13 T 16S R 8E, S.L. B&M.