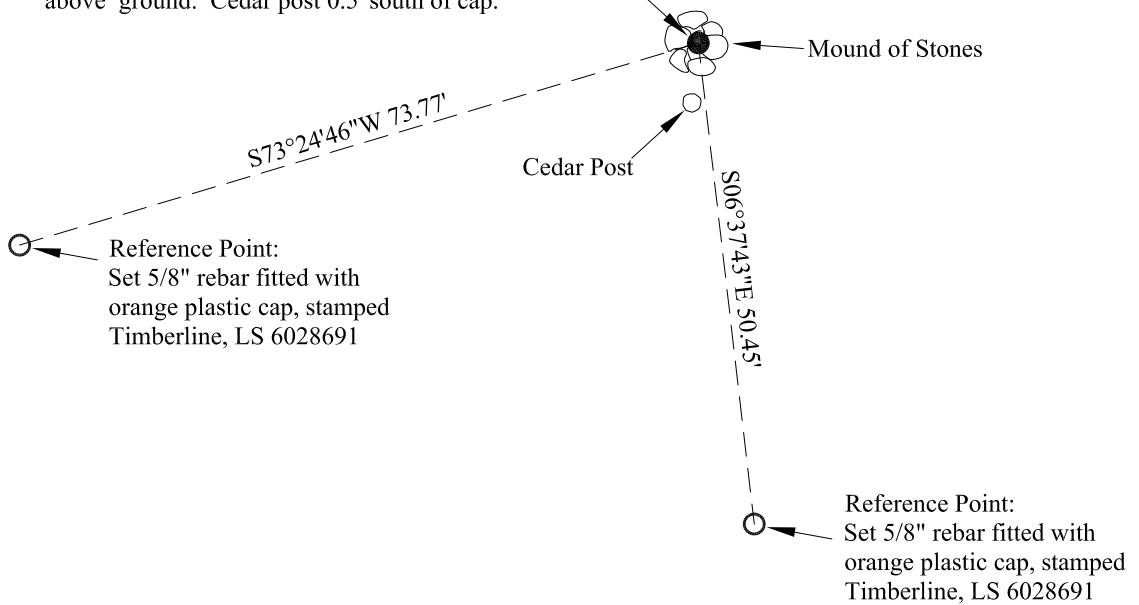


SURVEY MONUMENT RECORD - EMERY COUNTY UTAH

SKETCH SHOWING RELATIVE LOCATION OF MONUMENT, ACCESSORIES AND REFERENCE POINTS STATING WHETHER FOUND OR SET.
Also, indicate scale and basis of bearings.

West 1/4 Corner of Section 12, T16S, R8E, S.L.B.&M.:
Found 2 1/2", 1976 brass cap on a 2" pipe, surrounded
by a mound of stones, 3' base, 1' high. Pipe protrudes 0.2'
above ground. Cedar post 0.5' south of cap.



Date: 5-2-13
Not to Scale



Corner Monument Markings - Photo View or Stamping on Cap

BLM POINT ID (GCDB): UT260160S0080E0_600540

UNITS = US SURVEY FOOT

COORDINATES DETERMINED FROM:
UTAH REFERENCE NETWORK CONTROL SYSTEM

GEOID12A (CONUS), NAVD 88 ELEVATION = 6769.8'

STATE PLANE COORDINATES

"UTAH COORDINATE SYSTEM 1983 CENTRAL ZONE"

NORTHING = 6,967,442.394

EASTING = 1,786,135.040

GEOGRAPHIC COORDINATES - NAD 83

LATITUDE = N 39° 26' 46.43012"

LONGITUDE = W 110° 59' 02.33010"

ELLIPSOID HEIGHT = 6715.22'

ADDITIONAL INFORMATION

Point ties from the West 1/4 Corner of Section 12, T16S, R8E, S.L.B.&M. to neighboring Section Corners:

1. The South 1/4 Corner of Section 12, T16S, R8E, S.L.B.&M., being a 1976 Brass Cap, bears S44°47'20"E 3751.26'.
2. The Southwest Corner of Section 12, T16S, R8E, S.L.B.&M., being a 1976 Brass Cap, bears S00°10'10"W 2635.90' (Basis of Bearings).



PHOTO OF CORNER

CERTIFICATION

This is to certify that I was in responsible charge of the surveying work described in this record and that to the best of my knowledge the information presented herein is true and correct.

Surveyor's Name (Please Print): John R Slauch

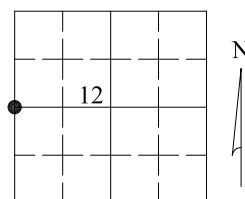
Firm Name: Timberline Engineering and Land Surveying, Inc.

Firm Address: 209 North 300 West Vernal, Utah 84078

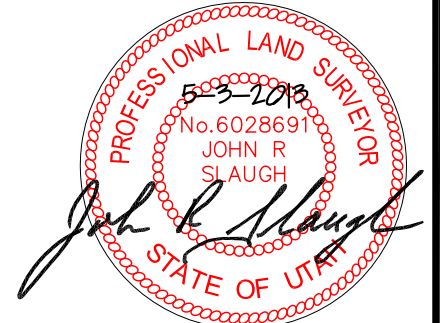
Utah License Number: 6028691 Survey Date: April 25, 2013

LOCATION DIAGRAM

1" = 1 Mile



● = Location of Monument



Signature/Date through Seal

SEC 12 T 16S R 8E, S.L. B&M.