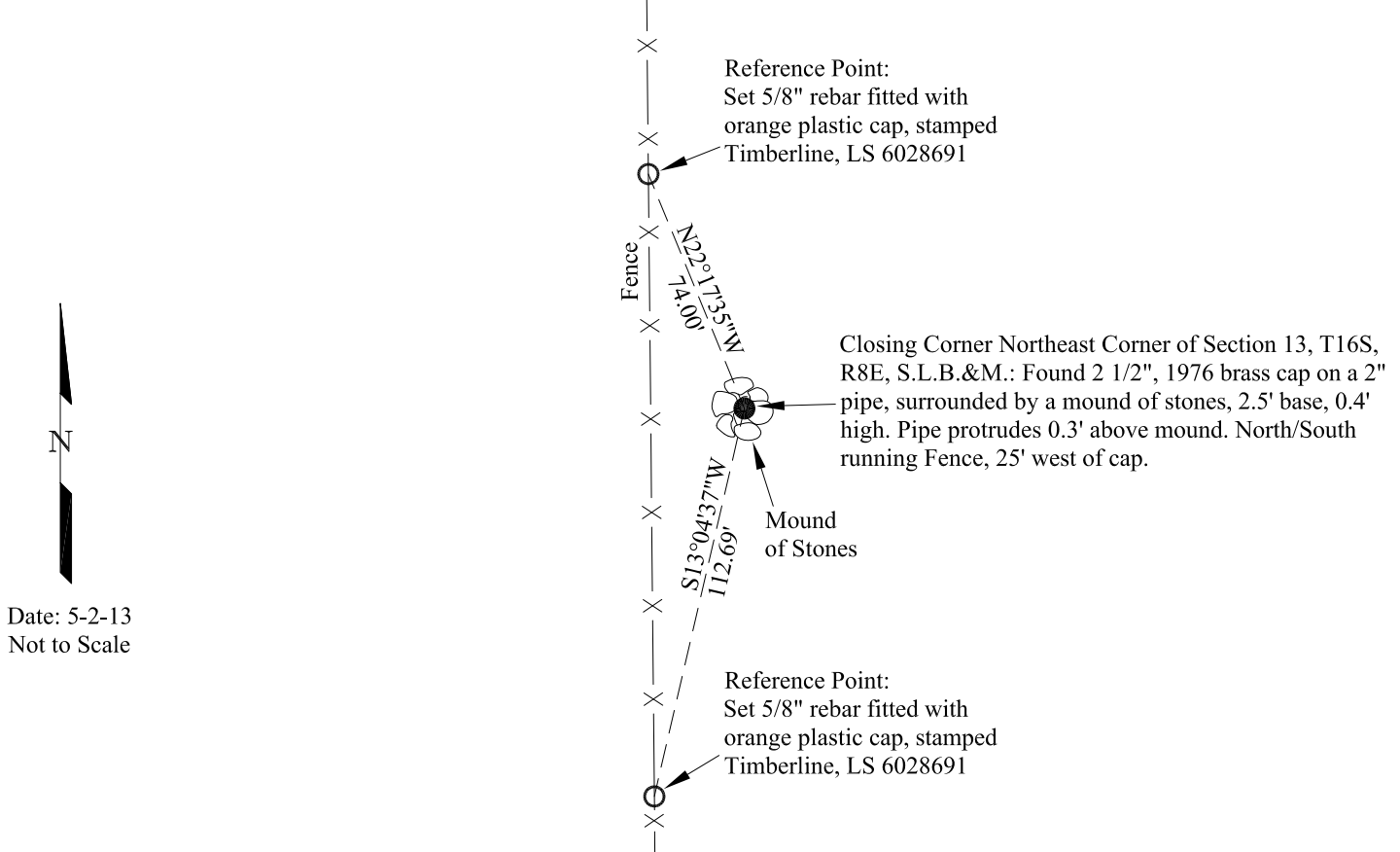


SURVEY MONUMENT RECORD - EMERY COUNTY UTAH

SKETCH SHOWING RELATIVE LOCATION OF MONUMENT, ACCESSORIES AND REFERENCE POINTS STATING WHETHER FOUND OR SET.
Also, indicate scale and basis of bearings.



Corner Monument Markings - Photo View or Stamping on Cap

BLM POINT ID (GCDB): UT260160S0080E0_700500
UNITS = US SURVEY FOOT
COORDINATES DETERMINED FROM: UTAH REFERENCE NETWORK CONTROL SYSTEM
GEOID12A (CONUS), NAVD 88 ELEVATION = 6594.8'
STATE PLANE COORDINATES
"UTAH COORDINATE SYSTEM 1983 CENTRAL ZONE"
NORTHING = 6,964,782.945
EASTING = 1,791,390.014
GEOGRAPHIC COORDINATES - NAD 83
LATITUDE = N 39° 26' 19.83937"
LONGITUDE = W 110° 57' 55.54201"
ELLIPSOID HEIGHT = 6539.85'

ADDITIONAL INFORMATION

Point ties from the Closing Corner Monument at the Northeast Corner of Section 13, T16S, R8E, S.L.B.&M. to neighboring Section Corners:

1. The North 1/4 Corner of Section 13, T16S, R8E, S.L.B.&M., being a 1976 Brass Cap, bears N89°21'36"W 2598.73' (Basis of Bearings).
2. The West 1/4 Corner of Section 12, T16S, R8E, S.L.B.&M., being a 1976 Brass Cap, bears N62°49'13"W 5891.92'.



PHOTO OF CORNER

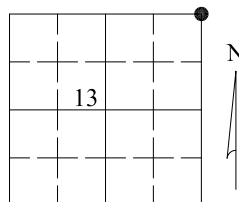
CERTIFICATION

This is to certify that I was in responsible charge of the surveying work described in this record and that to the best of my knowledge the information presented herein is true and correct.

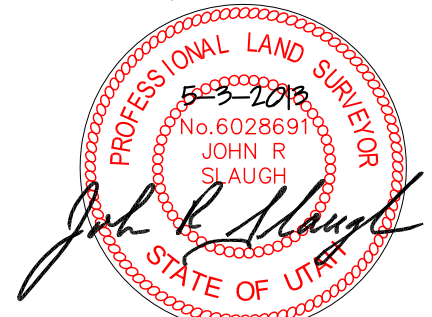
Surveyor's Name (Please Print): John R Slauch
 Firm Name: Timberline Engineering and Land Surveying, Inc.
 Firm Address: 209 North 300 West Vernal, Utah 84078
 Utah License Number: 6028691 Survey Date: April 25, 2013

LOCATION DIAGRAM

1" = 1 Mile



● = Location of Monument



Signature/Date through Seal

SEC 13 T 16S R 8E, S.L. B&M.