

UTAH LAND SURVEY MONUMENT RECORD

• TYPE OF MONUMENT: SECTION CORNER QUARTER CORNER SIXTEENTH CORNER OTHER _____

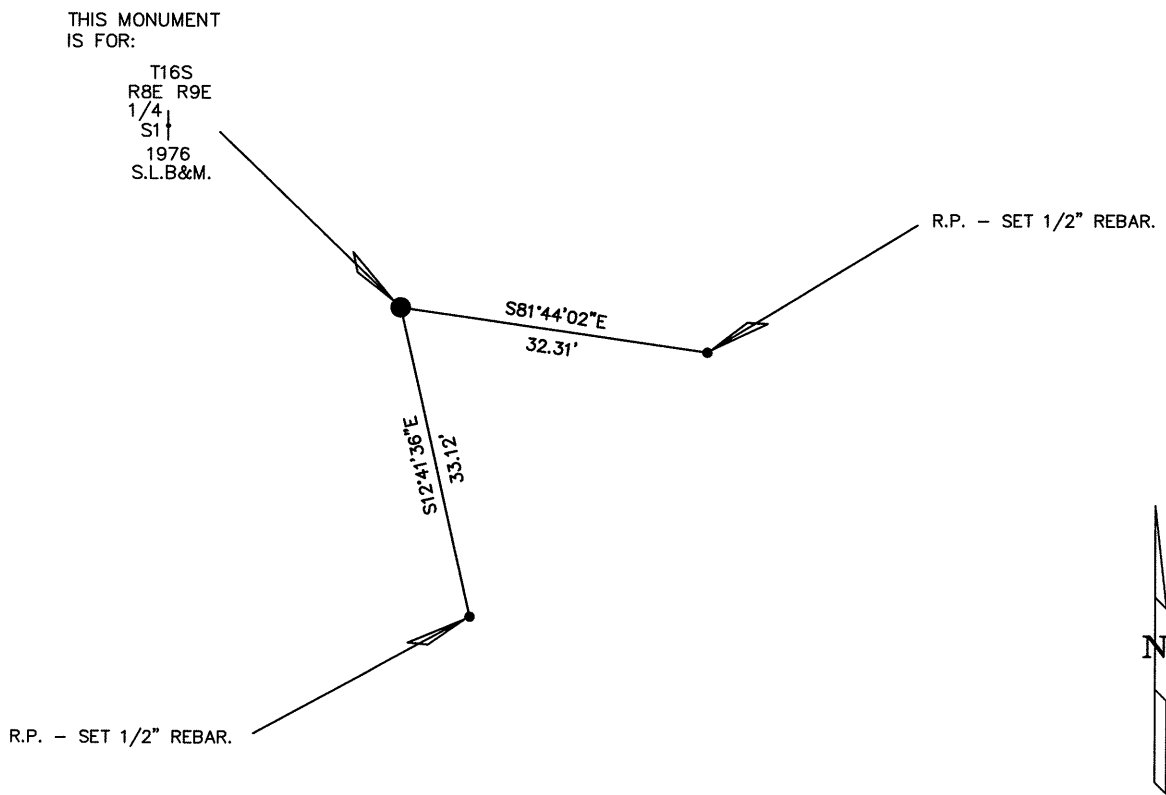
• DESCRIPTION AND DATE OF MONUMENT FOUND:

ON THE DATE OF 08/15/2016 THE MONUMENT WAS FOUND FOR THIS 1/4 CORNER OF MINIMUM CONTROL WHICH IS A CADASTRAL 3 1/4" BRASS CAP ON A 2" PIPE PROTRUDING 1.2' ABOVE THE GROUND IN A PILE OF STONES 3'X3'X1'. WITH A N/S FENCE LINE 7.0' EAST OF CAP.

• DESCRIPTION OF MONUMENT SET BY YOU TO PERPETUATE THE LOCATION OF THIS POINT:

SET REFERENCE POINTS FOR THE MONUMENT AS SHOWN.

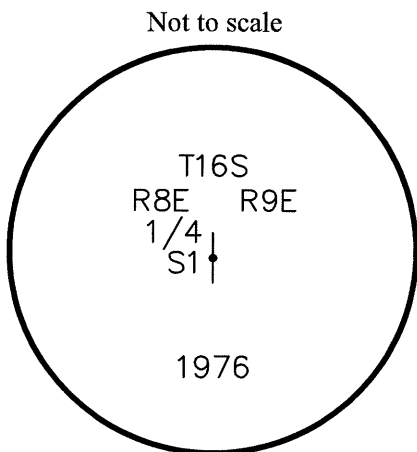
• SKETCH SHOWING RELATIVE LOCATION OF MONUMENT, ACCESSORIES AND REFERENCE POINTS STATING WHETHER FOUND OR SET, SHOW SUPPORTING AND/OR CONTRADICTORY EVIDENCE WHERE APPLICABLE:



N

SCALE 1"=20'
(EXCEPT IN TRIVIAL CASES)
BEARINGS ARE RELATED TO WGS 84 WITH GPS OBSERVATIONS
DRAWN BY: J.L.
11/09/2016
P.C. B. HUNTING

NOTE:
WGS 84 COORDINATE
LAT. 39°27'38.00"
LONG. 110°57'56.19"



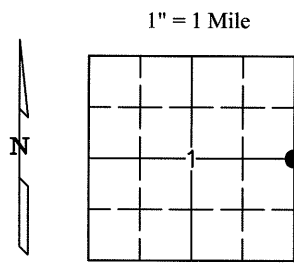
Stamping on Cap

- a. Date of field Work to Establish, Restore or Rehabilitate Monument: 08/15/2016
- b. Date Monument was used as a Control corner: 08/15/2016

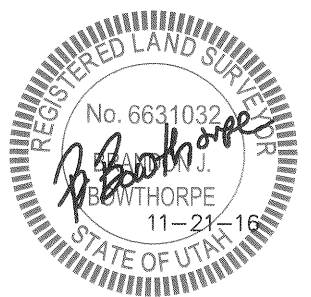
CERTIFICATION

This is to certify that I was in responsible charge of the surveying work described in this record and that to the best of my knowledge the information presented herein is true and correct.

Surveyor's Name (Please Print): BRANDON J. BOWTHORPE
 Firm Name: UELS, LLC
 Firm Address: 85 SOUTH 200 EAST, VERNAL, UTAH 84078
 Phone: 435-789-1017 Utah License Number: 6631032



● = Location of Monument



Corner CORNER COMMON TO 1 SECTION
 Name: EAST 1/4 CORNER OF SECTION 1 Signature/Date through Seal
 SEC 1 T 16S R 8E, S.L. B&M.
 COUNTY EMERY INDEX REF NUMBER 25-X