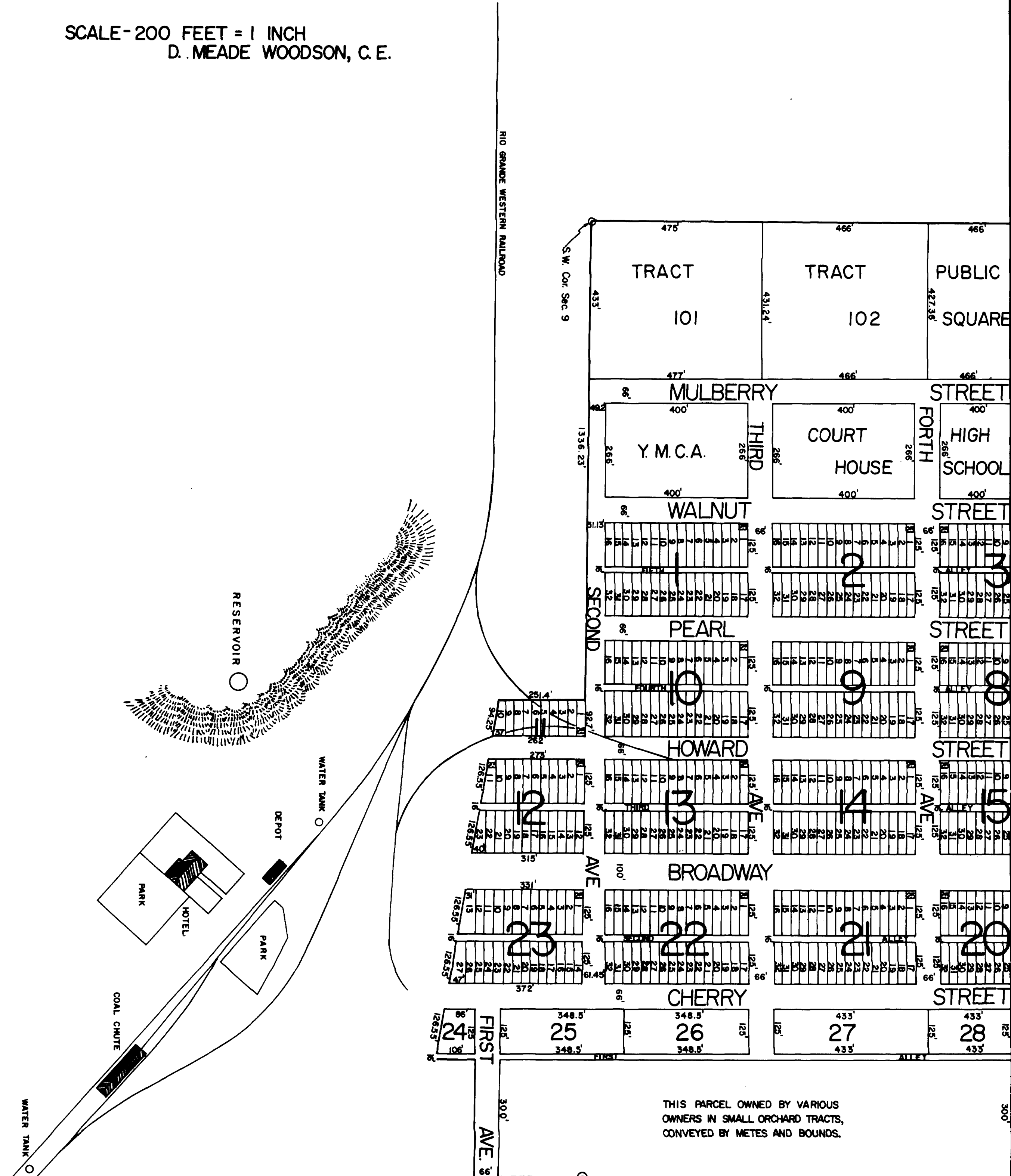


FIRST DIVISION OF GREEN RIVER

SCALE-200 FEET = 1 INCH
D. MEADE WOODSON, C. E.



ONE HALF
MILE POST
QUARTER SEC.
COR. ON SEC.
LINE BETWEEN
SECTIONS 9
AND 16 TR. 218.
RISE. SLM.

