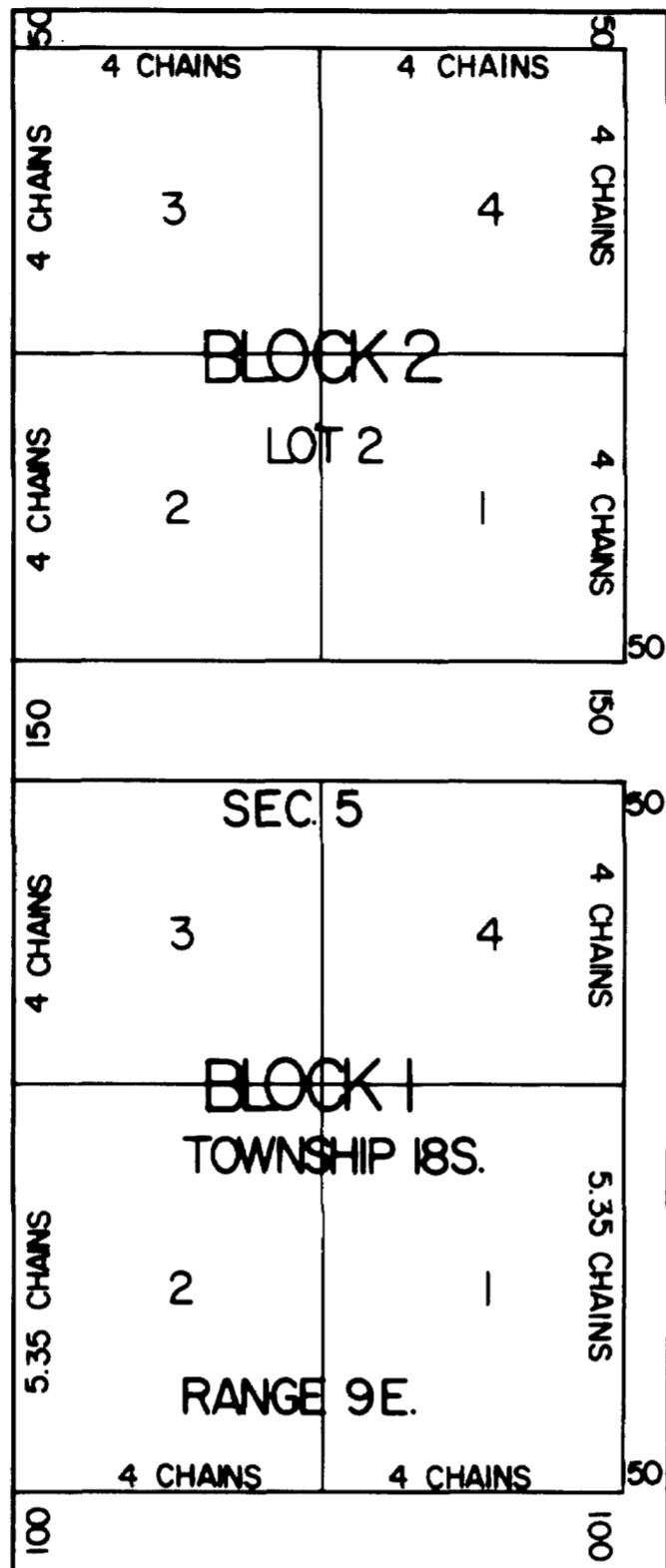


PLAT "A" LAWRENCE-TOWNSITE



VAR 16° 15' EAST
Scale 32 inches to one mile

Price, Utah, Sept. 18th 1893.

I hereby certify that the above plat correctly represents a survey made by me on the 6th day of July 1893, of plat "A" of Lawrence Townsite, Emery County Utah.

W. J. Gidwell
county surveyor.

Know all men by these presents that we William H. McArthur and Henryzetty M. McArthur, his wife, of Emery County, Utah Territory, hereby certify and declare that we are the sole owners of land embraced in this plat; that all lots herein shown have a frontage of 4 chains and a depth of 4 chain except lots 1 and 2 in block 1 which has a depth of 5.35 chains; that all street shown hereon has a width as indicated in links. That all streets and avenues hereon shown are hereby set apart for and dedicated to the use of the public forever. That this plat is hereby denominated Plat "A" Lawrence Townsite.

In witness whereof we have hereunto set our hands at Castle Dale, Emery County, Utah, this 1st day of November, 1893.

Signed in the presence of
Carl Wilberg

William H. McArthur
Henryzetty M. McArthur

Territory of Utah ss
County of Emery

On this 1st day of November, 1893, personally appeared before me William H. McArthur and Henryzetty M. McArthur the signers of the above instrument who duly acknowledged to me that they executed the same.

Carl Wilberg Seal
County Clerk,
Emery County, Utah

Approved November 1st 1893.

Orange Seely
Probate Judge

Attest: Carl Wilberg Seal
Clerk

Filed for record and recorded November 1st 1893, at 2 P. M.

Carl Wilberg Seal
County Recorder
Emery County

Traced by svk
Johansen & Tuttle
8-75