

Emery County Camp Grounds

| Camp Grounds | Water | Toilets | Showers | Grills | Boating | Fishing | Dump Station | Boat Launching | Hook Ups | Food | Swimming | Gas |
|-------------------------------------|-------|---------|---------|--------|---------|---------|--------------|----------------|----------|------|----------|-----|
| 1 - Old Folks Flat | * | * | | | | * | | | | | | |
| 2 - Forks of Huntington | * | * | | | | * | | | | | | |
| 3 - Indian Creek | * | * | | | | * | | | | | | |
| 4 - Bear Creek | * | * | | * | | * | | | | | | |
| 5 - Huntington Lake State Park | * | * | * | * | * | * | * | * | | * | | |
| 6 - Cleveland-Lloyd Dinosaur Quarry | * | * | | | | | | | | | | |
| 7 - Cedar Mountain | | | | * | | | | | | | | |
| 8 - Joes Valley | * | * | | * | * | | * | | * | | | * |
| 9 - Ferron Canyon | * | * | | | * | | | | | | | |
| 10 - Millsite State Park | * | * | * | * | * | * | * | * | | * | | |
| 11 - Swinging Bridge | * | * | | | * | | | | | | | |
| 12 - Green River State Park | * | * | * | * | * | * | * | | | * | | |
| 13 - Goblin Valley State Park | * | * | * | * | | * | | | | | | |

★ Campgrounds

— Interstate

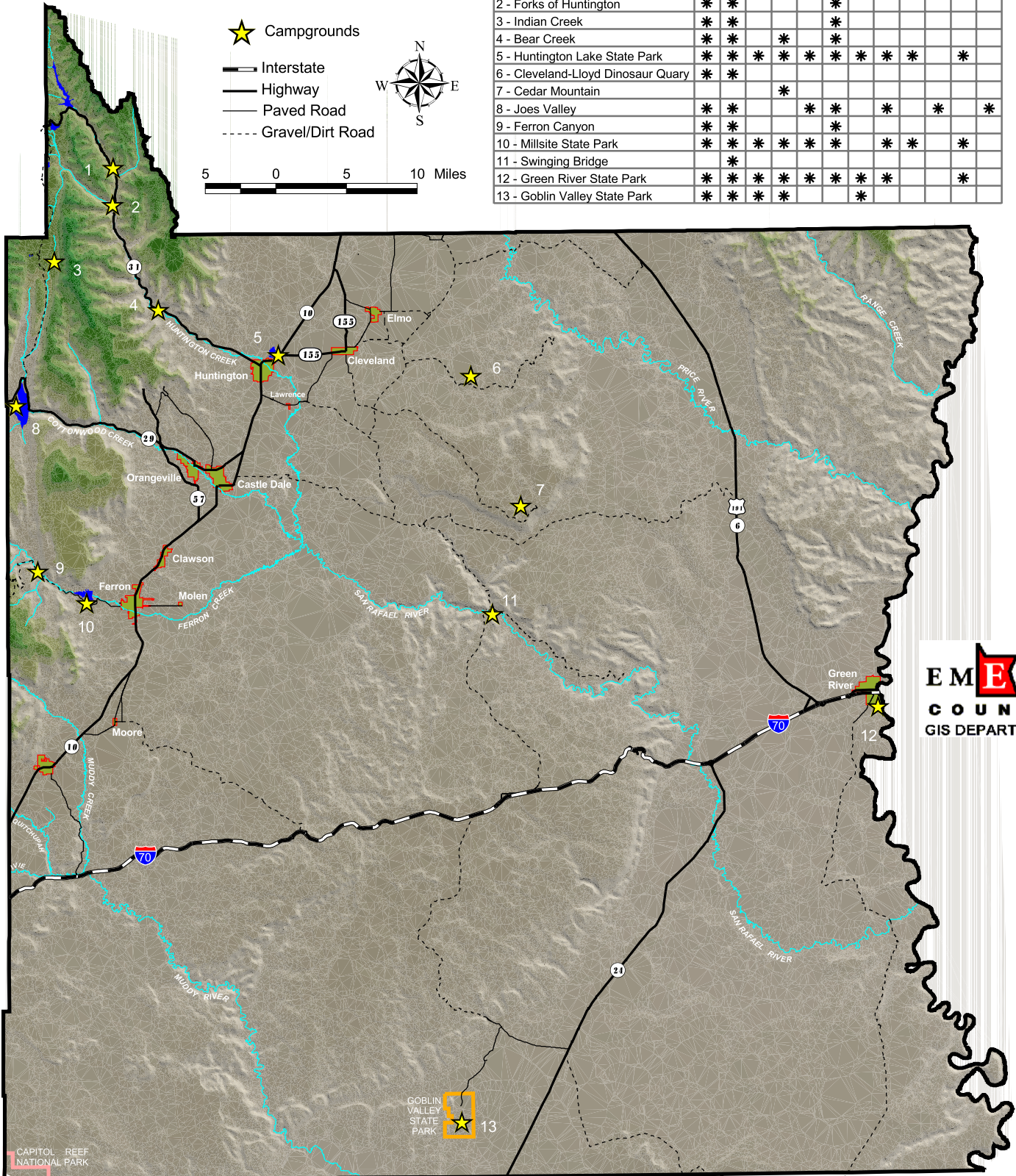
— Highway

— Paved Road

- - - Gravel/Dirt Road



5 0 5 10 Miles



EMERY
COUNTY
GIS DEPARTMENT

This map is made for viewing purposes only. Emery County assumes no liability for the accuracy of this map.

↙ To Hanksville/Capitol Reef National Park
Lake Powell/Bullfrog Marina