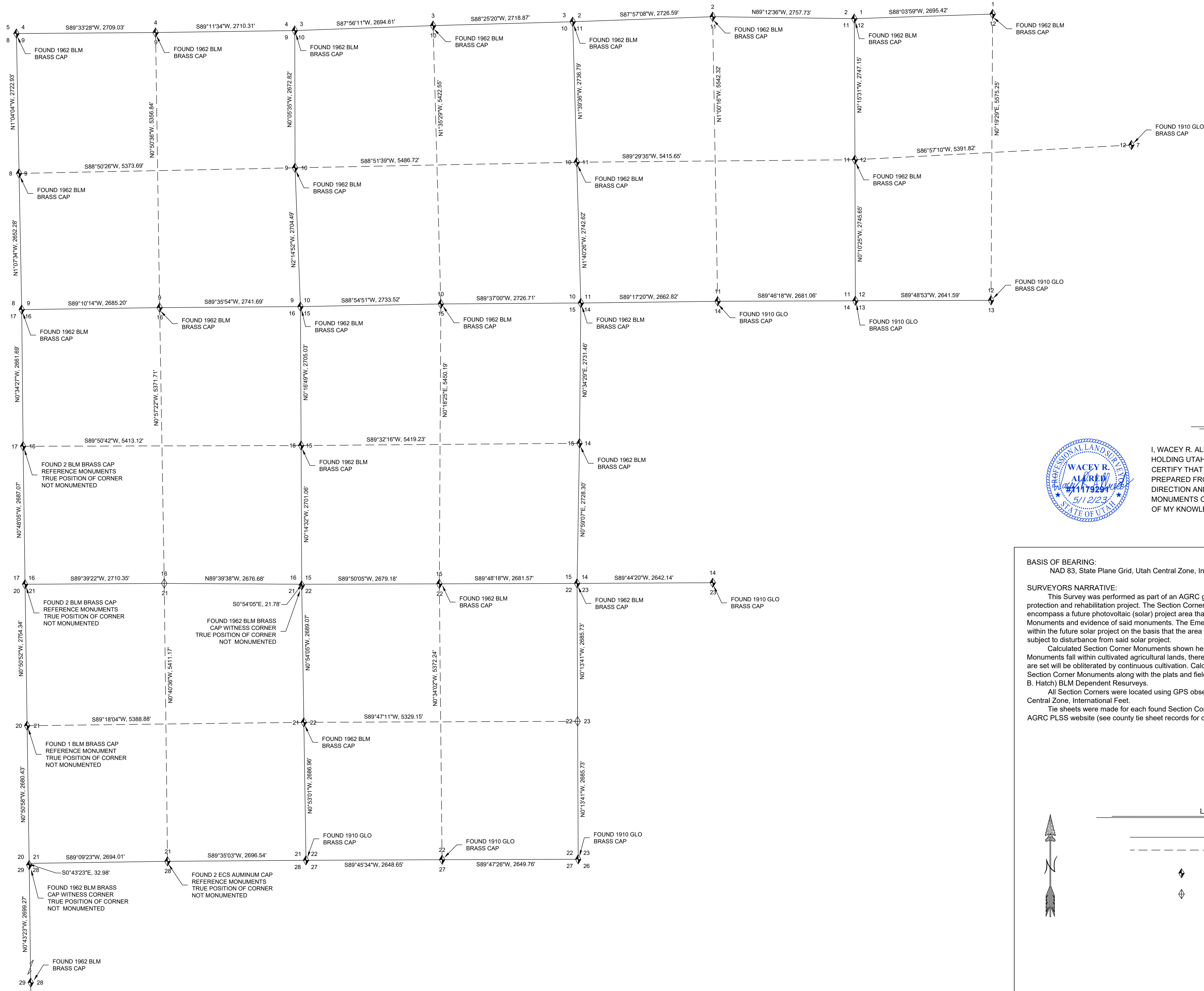
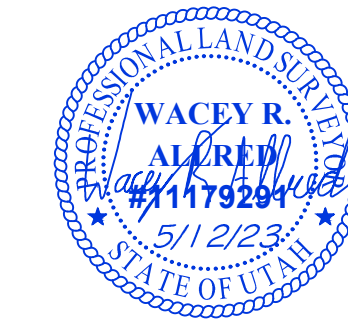


# EMERY COUNTY CONTROL

SHEET 1 OF 2  
 MONUMENT REHABILITATION OF CORNERS COMMON  
 WITH SECTIONS 1 THRU 5, 8 THRU 23, 26 THRU 29 AND 32  
 IN TOWNSHIP 21 SOUTH, RANGE 7 EAST,  
 SALT LAKE BASE AND MERIDIAN



### CERTIFICATE



I, WACEY R. ALLRED, A PROFESSIONAL LAND SURVEYOR HOLDING UTAH CERTIFICATE NO. 11179291, DO HEREBY CERTIFY THAT THE PLAT SHOWN HEREON HAS BEEN PREPARED FROM A FIELD SURVEY MADE UNDER MY DIRECTION AND CORRECTLY SHOWS THE DIMENSIONS AND MONUMENTS OF THE PROPERTY DESCRIBED TO THE BEST OF MY KNOWLEDGE AND BELIEF.

**BASIS OF BEARING:**  
 NAD 83, State Plane Grid, Utah Central Zone, International Feet.

**SURVEYORS NARRATIVE:**  
 This Survey was performed as part of an AGRC grant for the County PLSS monument preservation and rehabilitation project. The Section Corners that were selected for this years grant project encompass a future photovoltaic (solar) project area that may be subject to disturbance of the Section Monuments and evidence of said monuments. The Emery County Recorder selected these Section Corners within the future solar project on the basis that the area within them are predominately private ownership and subject to disturbance from said solar project.  
 Calculated Section Corner Monuments shown hereon were not set. These said calculated Section Monuments fall within cultivated agricultural lands, therefore, any monument or evidence of said monument that are set will be obliterated by continuous cultivation. Calculations for said corners were based on found adjacent Section Corner Monuments along with the plats and field notes from the 1910 (A. D. Ferron) and the 1963 (Glen B. Hatch) BLM Dependent Resurveys.  
 All Section Corners were located using GPS observations in NAD83 State Plane Coordinate System, Utah Central Zone, International Feet.  
 The sheets were made for each found Section Corner shown hereon and were uploaded to the Utah AGRC PLSS website (see county tie sheet records for detailed information on each monument).



LEGEND	
	SECTION LINE
	QUARTER SECTION LINE
	FOUND SECTION CORNER MONUMENT
	CALCULATED SECTION CORNER POSITION

DESIGNED	CHECKED
DRAWN	CHECKED
SURVEYED	CHECKED
R.O.W.	CHECKED

WACEY R. ALLRED  
 PROFESSIONAL LAND SURVEYOR 11179291

**Johnsen & Little**  
 ENGINEERING INC.  
 P.O. Box 487, Castle Dale, UT 84513  
 (435) 381-2323 Fax (435) 381-2522 e-mail: jll@jlv.net

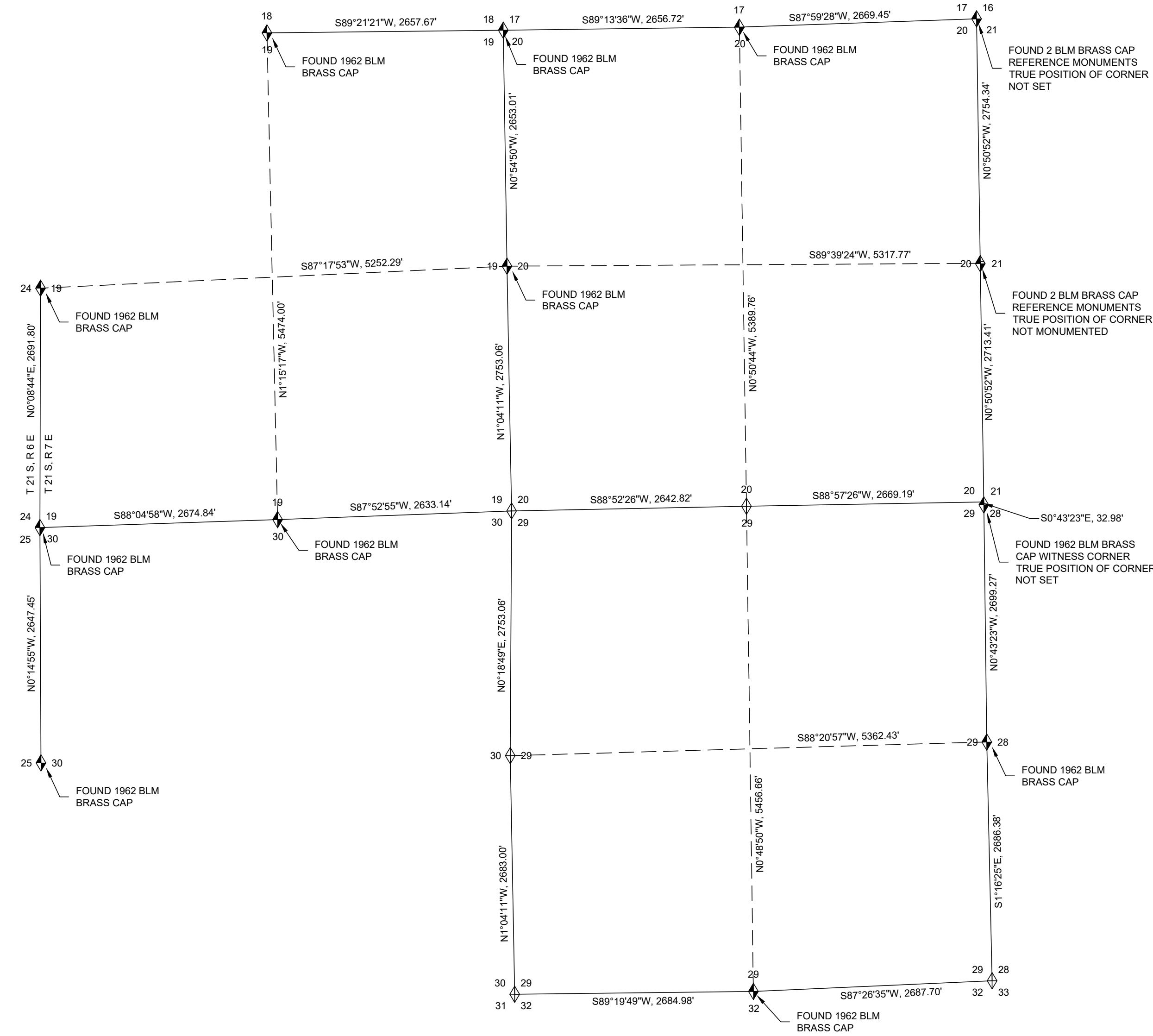
## AGRC PLSS EMERY COUNTY SECTION CORNERS

SECTION	TOWNSHIP	RANGE	DATE	SCALE
21 S.	21 S.	7 E.	5-9-23	1" = 1000'
LOTS	BLOCK	SURVEY		DRAWN BY
				M/PCA

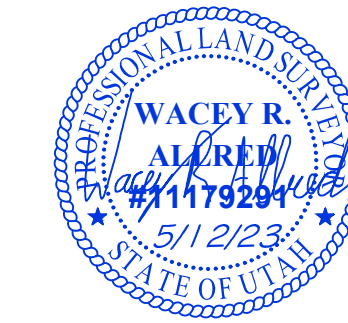
PROJECT No.  
 SHEET No.  
 1 of 2

# EMERY COUNTY CONTROL

SHEET 2 OF 2  
 MONUMENT REHABILITATION OF CORNERS COMMON  
 WITH SECTIONS 1 THRU 5, 8 THRU 23, 26 THRU 29 AND 32  
 IN TOWNSHIP 21 SOUTH, RANGE 7 EAST,  
 SALT LAKE BASE AND MERIDIAN



### CERTIFICATE



I, WACEY R. ALLRED, A PROFESSIONAL LAND SURVEYOR HOLDING UTAH CERTIFICATE NO. 11179291, DO HEREBY CERTIFY THAT THE PLAT SHOWN HEREON HAS BEEN PREPARED FROM A FIELD SURVEY MADE UNDER MY DIRECTION AND CORRECTLY SHOWS THE DIMENSIONS AND MONUMENTS OF THE PROPERTY DESCRIBED TO THE BEST OF MY KNOWLEDGE AND BELIEF.

BASIS OF BEARING:  
 NAD 83, State Plane Grid, Utah Central Zone, International Feet.

**SURVEYORS NARRATIVE:**  
 This Survey was performed as part of an AGRC grant for the County PLSS monument preservation and rehabilitation project. The Section Corners that were selected for this years grant project encompass a future photovoltaic (solar) project area that may be subject to disturbance of the Section Monuments and evidence of said monuments. The Emery County Recorder selected these Section Corners within the future solar project on the basis that the area within them are predominately private ownership and subject to disturbance from said solar project.  
 Calculated Section Corner Monuments shown hereon were not set. These said calculated Section Monuments fall within cultivated agricultural lands, therefore, any monument or evidence of said monument that are set will be obliterated by continuous cultivation. Calculations for said corners were based on found adjacent Section Corner Monuments along with the plats and field notes from the 1910 (A. D. Ferron) and the 1963 (Glen B. Hatch) BLM Dependent Resurveys.  
 All Section Corners were located using GPS observations in NAD83 State Plane Coordinate System, Utah Central Zone, International Feet.  
 The sheets were made for each found Section Corner shown hereon and were uploaded to the Utah AGRC PLSS website (see county tie sheet records for detailed information on each monument).



### LEGEND

- SECTION LINE
- - - QUARTER SECTION LINE
- ◆ FOUND SECTION CORNER MONUMENT
- ◇ CALCULATED SECTION CORNER POSITION

DESIGNED	CHECKED	DATE
DRAWN	CHECKED	DATE
SURVEYED	CHECKED	DATE
R.O.W.	CHECKED	DATE

WACEY R. ALLRED  
 PROFESSIONAL LAND SURVEYOR 11179291

**Johansen & Little**  
 ENGINEERING INC.  
 P.O. Box 487, Castle Dale, UT 84513  
 (435) 381-2323 Fax (435) 381-2522, e-mail: jll@jlv.net

## AGRC PLSS EMERY COUNTY SECTION CORNERS

SECTION	TOWNSHIP	RANGE	DATE	SCALE
	21 S.	7 E.	5-9-23	1" = 1000'
LOTS	BLOCK	SURVEY	DRAWN BY	W/PCA

PROJECT No.  
 SHEET No.  
 2 of 2